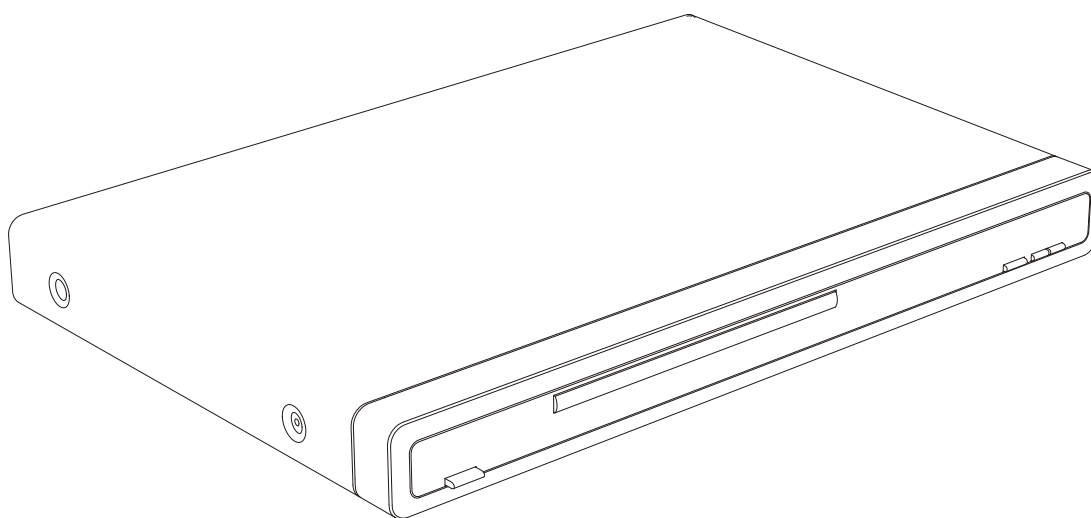


Manual de Serviço



**D
V
D

D
3
0
0
0**

0800 415300

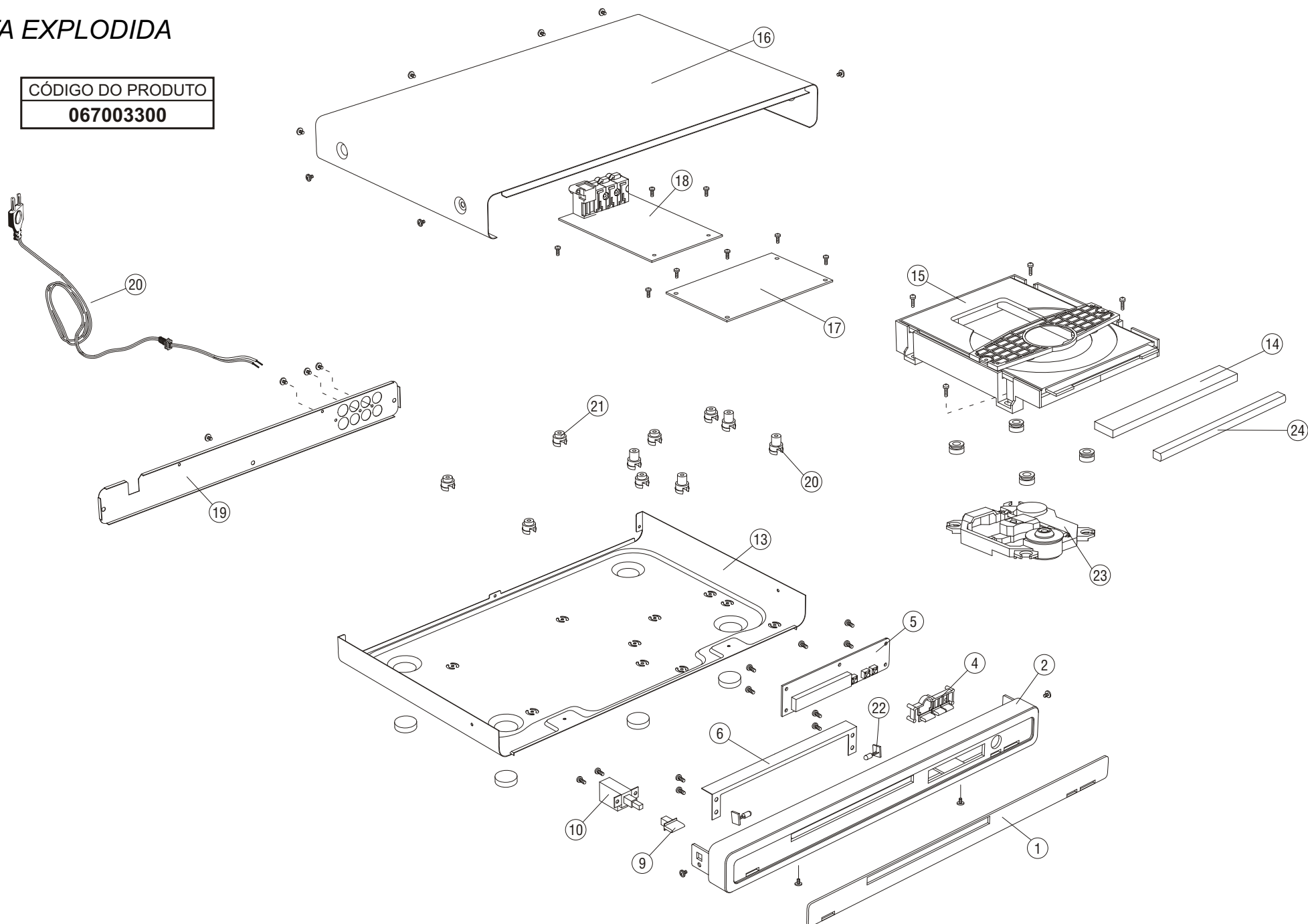
assistenciatecnica@britania.com.br

Política da Qualidade Britânia

"Oferecer produtos que contribuam para a satisfação de nossos clientes, buscando a melhoria contínua de nossos processos"

VISTA EXPLODIDA

CÓDIGO DO PRODUTO
067003300



ITENS DA VISTA EXPLODIDA

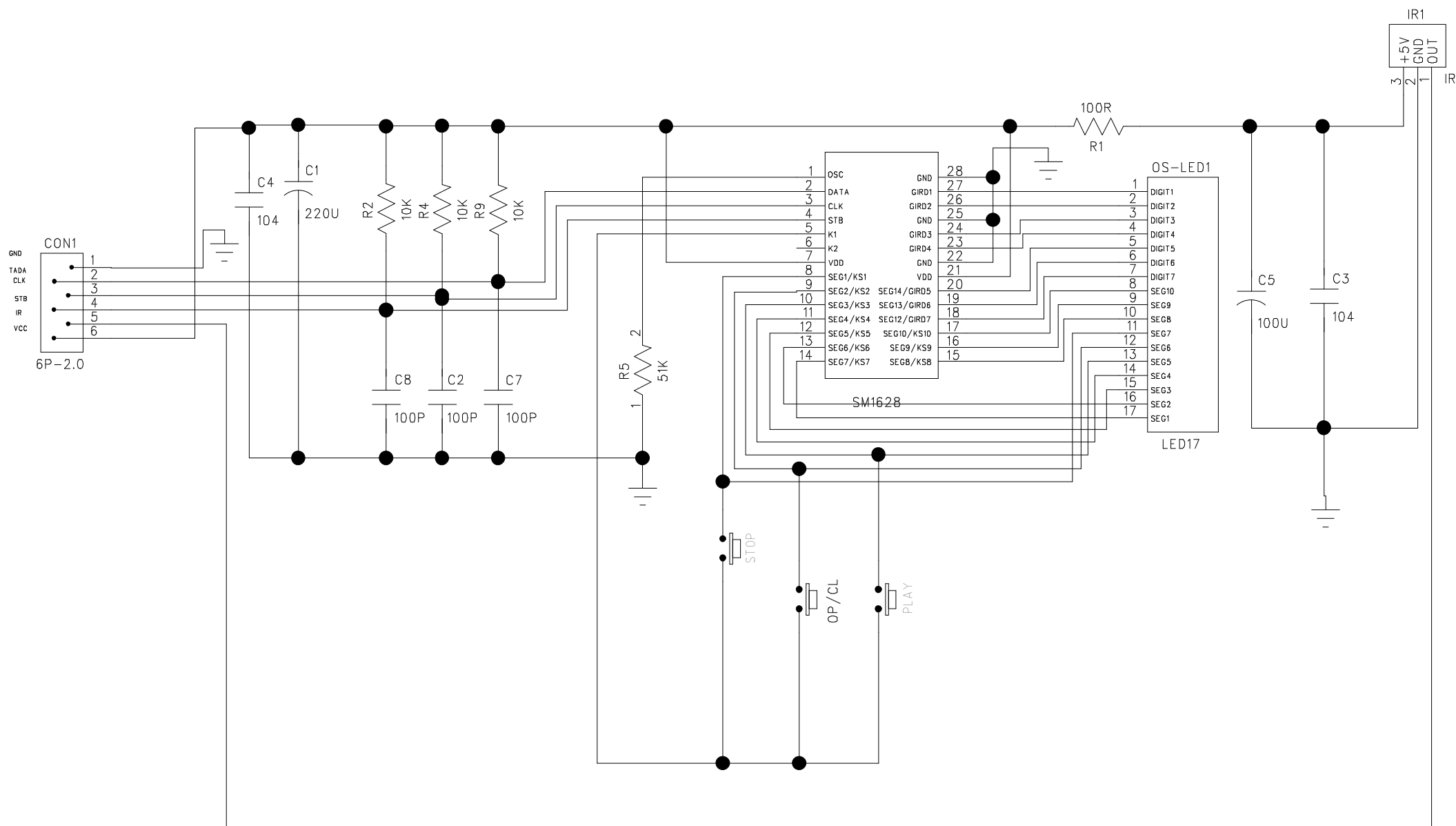
Nº	Descrição	Código
1	VISOR DISPLAY DVD D3000	704011
2	GABINETE FRONTAL DVD-3000	703492
4	BOTOES PLAY/PAUSE/STOP/EJECT	704004
5	PCI DISPLAY	703490
6	REFORCO GABINETE FRONTAL	704000
9	BOTAO CHAVE MASTER	704002
10	CHAVE MASTER	704001
13	GABINETE INFERIOR DVD-3000	703992
14	PROTECAO DA GAVETA DVD-3000	703994
15	MECANISMO DVD KHM-3610AAA	703494
16	GABINETE SUPERIOR DVD-3000	703990
17	PCI FONTE 2 CONEC D3000	703491
17	PCI FONTE 3 CONEC D3000	703503
17	PCI FONTE 4 CONEC D3000	703506
18	PCI PRINCIPAL 8 CONEC D3000	703496
18	PCI PRINCIPAL 8 CONEC D3000 C/ SAÍDA ÓTICA	703502
18	PCI PRINCIPAL 9 CONEC D3000	703504
19	GABINETE TRASEIRO DVD-3000	703991
20	CALCO PCI MAIOR	704010
21	CALCO PCI MENOR	703999
22	PCI LED	704003
23	UNIDADE OTICA KHM-310AAA	703493
24	VISOR PROTECAO DA GAVETA DVD-3000	703995

NOTA:

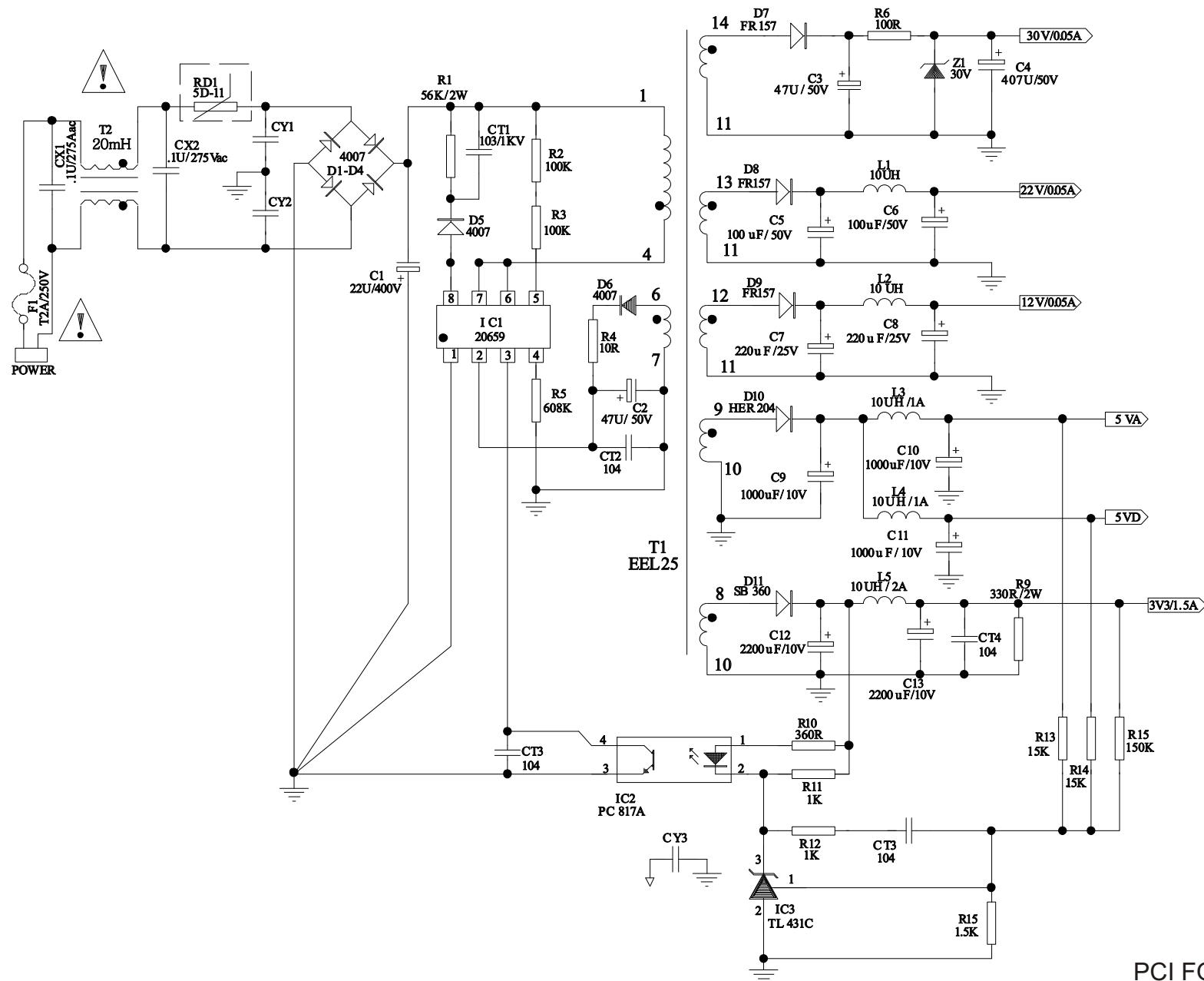
Dos itens da página anterior, somente aqueles que possuem códigos relacionados nas tabelas serão fornecidos.

DEMAIS COMPONENTES FORNECIDOS

Código	Descrição peça
702299	CIRC. INT. 1117
701907	CIRC. INT. 4558
701633	CIRC. INT. 817C
701905	CIRC. INT. A21SC
702305	CIRC. INT. CD5954CB
703367	CIRC. INT. EN29F040A
704012	CIRC. INT. KA5M02659RN / M02659R
704008	CIRC. INT. MT1389XE
704006	CIRC. INT. SM1628
704009	CIRC. INT. TS42S16100C1-7T
701632	CIRC. INT. WL431 / TL431
703495	CONTROLE REMOTO DVD 3000 (R)
701655	DIODO SR360 / SB360
703998	FLAT CABLE 24VIAS 21,5CM X 1,2CM (LADOS IGUAIS)
700105	TRANSISTOR S8050
700106	TRANSISTOR S8550
703497	EMBALAGEM DVD 3000
703498	MANUAL USUARIO DVD 3000
703500	CONJ. CALCO PROTECAO DVD D3000



PCI DISPLAY/TECLADO



33V	1
22V	2
12V	3
5VA	4
5VD	5
3V3	6
3V3	7
AGND	8
DGND	9
DGND	10

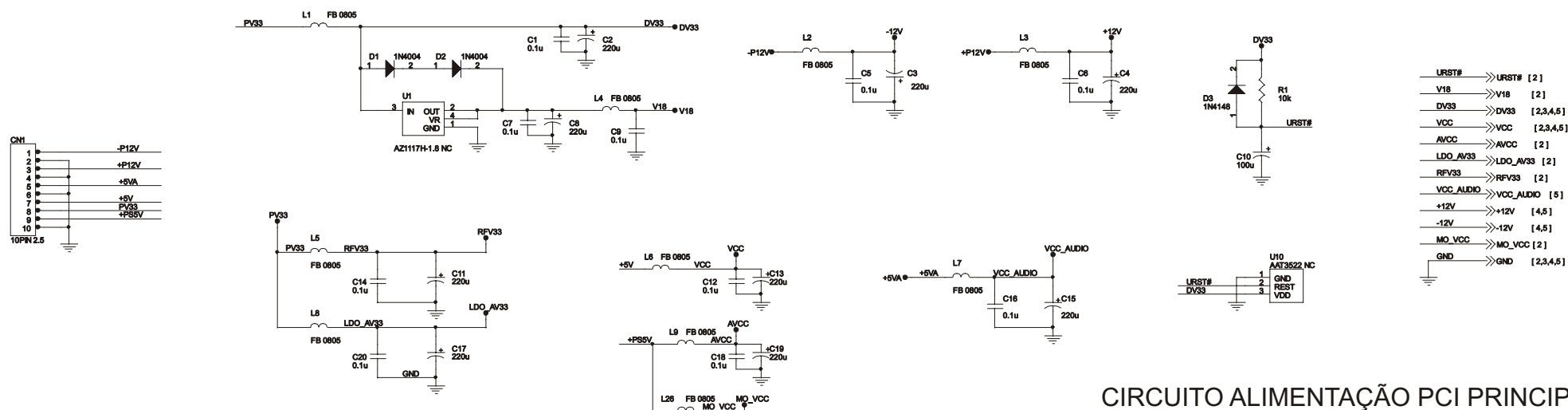
PCI FONTE VERSÃO A 2 CONEC

Part NO.
7.01.1.M1389001

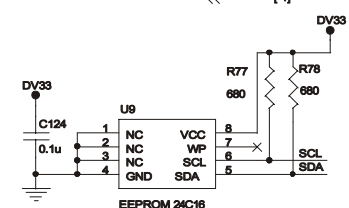
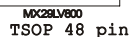
MT1389E DVD Demo Board for SONY KHM280 PUH

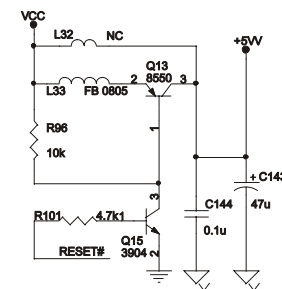
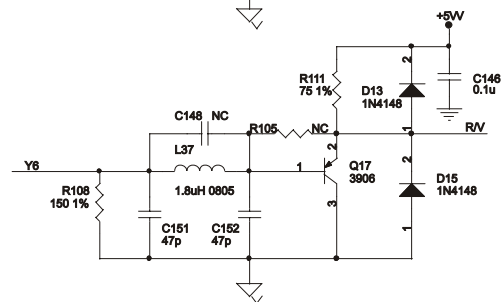
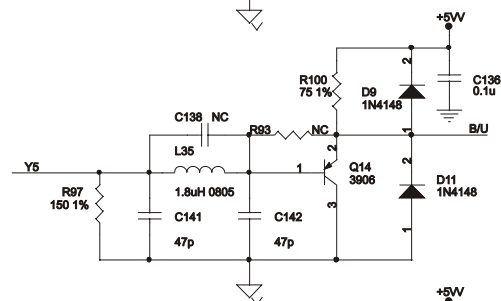
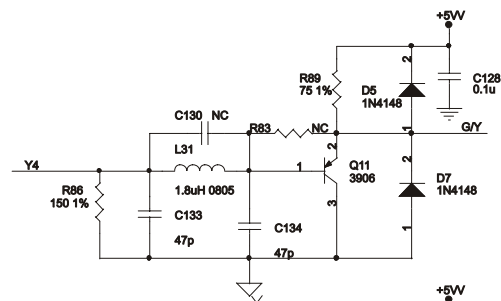
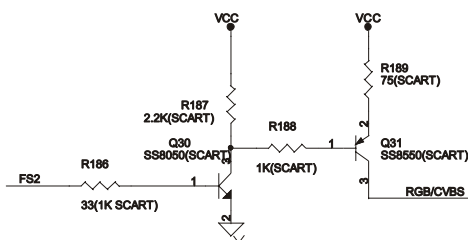
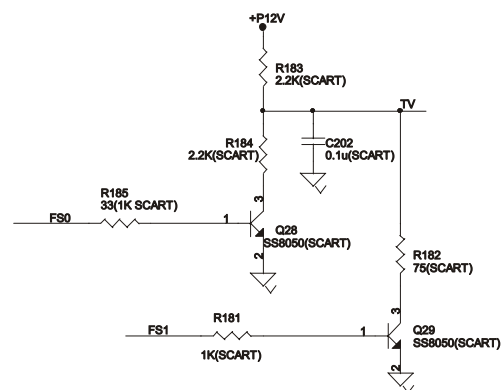
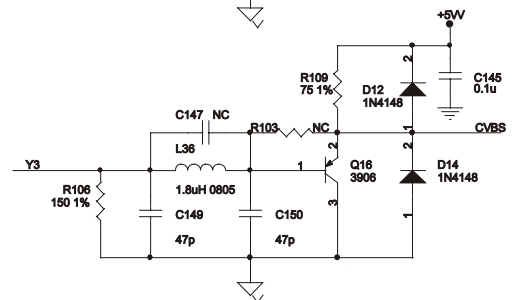
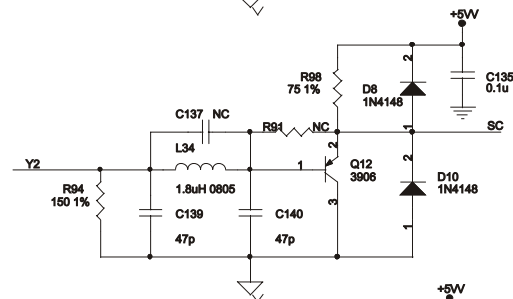
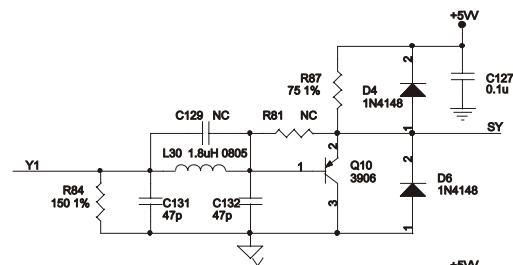
- 1 INDEX & POWER, RESET
- 2 RF / SERVO - MT1336E
- 3 MPEG - MT1379E
- 4 MEMORY - SDRAM, FLASH/EEPROM
- 5 AUDIO - WM8746, VIDEO FILTER

NAME	TYPE	DEVICE
VCC	Digital 5V	SUPPLY
DV33	Digital 3.3V	MT1389E
RFV33	Servo 3.3V	MT1389E
LDO_AV33	Laser Diode 3.3V	
AVCC	RF 5V	PICKUP HEADER
V18	Digital 1.8V	MT1389E
SD33	Digital 3.3V	SDRAM
+12V	Audio +12V	OP AMP.
-12V	Audio -12V	OP AMP.
AVDD	Audio 5V	Audio DAC
DVDD	Audio 5V	Audio DAC



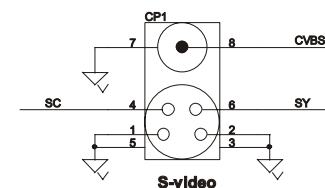
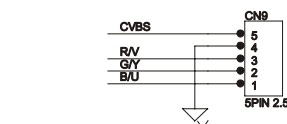
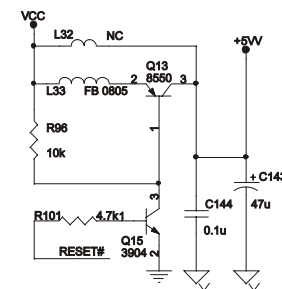
CIRCUITO ALIMENTAÇÃO PCI PRINCIPAL
8 CONEC (DRIVE CD 5954)





VCC	<< VCC	[1]
Y[1..6]	<< Y[1..6]	[2]
RESET#	<< RESET#	[2,5]
FS0	<< FS0	[2]
FS1	<< FS1	[2]
FS2	<< FS2	[2]
GND	<< GND	[1]

G/Y	>> G/Y	[5]
B/U	>> B/U	[5]
R/V	>> R/V	[5]
TV	>> TV	[5]
RGB/CVBS	>> RGB/CVBS	[5]

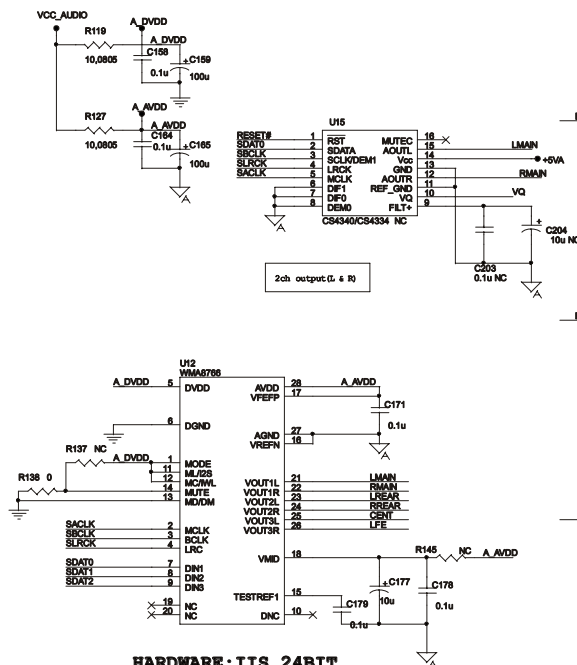


CIRCUITO SAÍDA VIDEO PCI PRINCIPAL
8 CONEC (DRIVE CD5954)

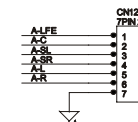
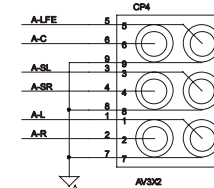
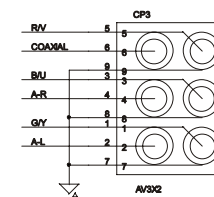
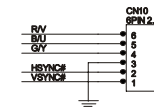
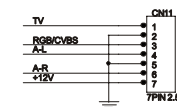
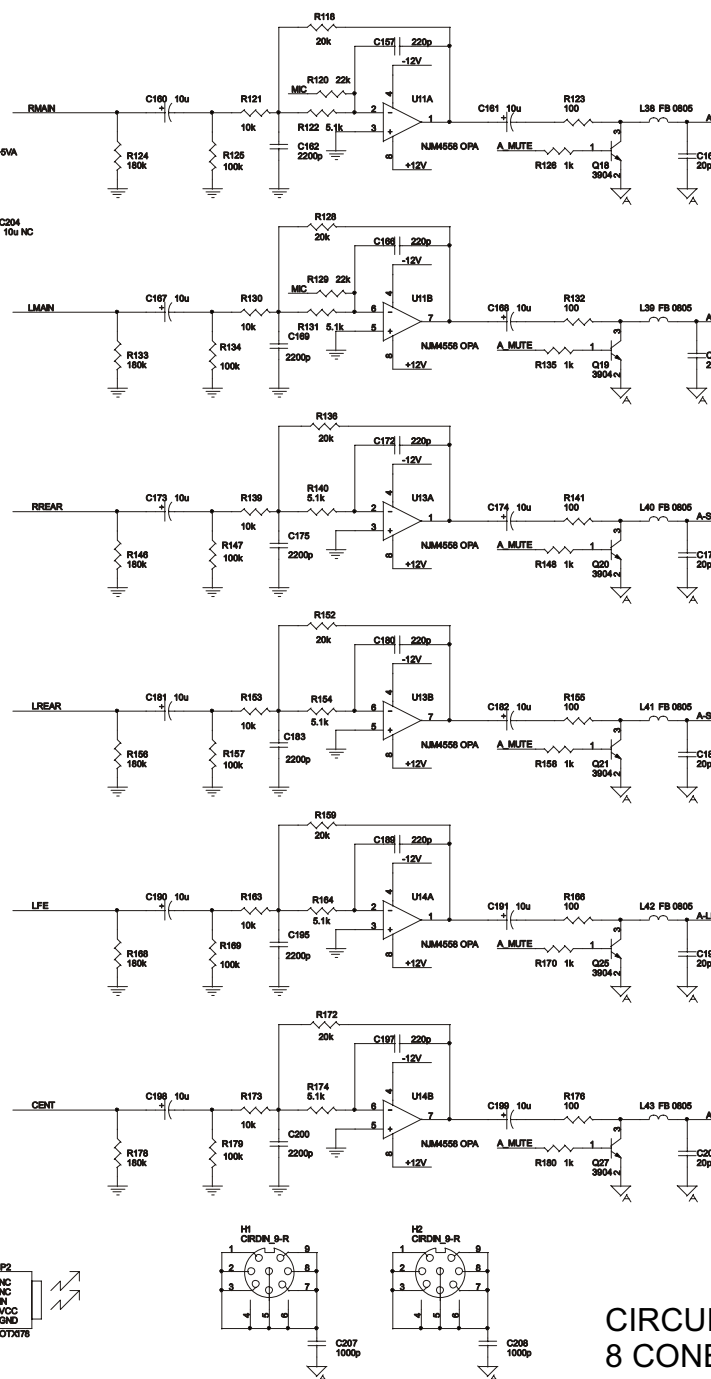
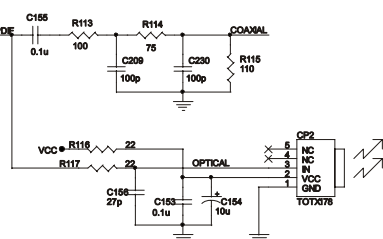
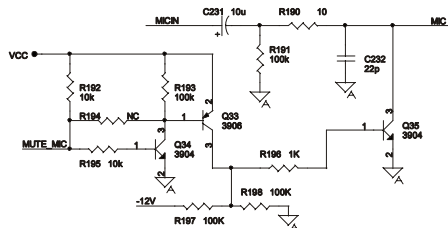
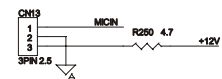
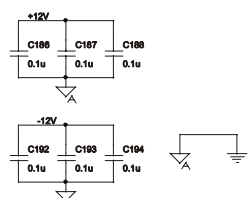
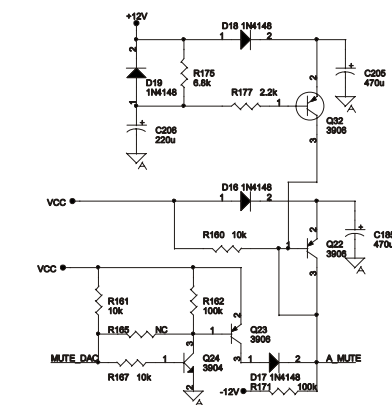
[1] -12V >> -12V
 [1] +12V >> +12V
 [1] VCC >> VCC
 [1] VCC_AUDIO >> VCC_AUDIO
 [1,2,3,4] GND >> GND

[2] ASDAT[0..2] >> ASDAT[0..2]
 [2] ACLK >> ACLK
 [2] ABCK >> ABCK
 [2] ALRCK >> ALRCK
 [2] MUTE_MIC >> MUTE_MIC
 [2] MUTE_DAC >> MUTE_DAC
 [2,4] RESET# >> RESET#
 [2,5] SCL << SCL
 [2,5] SDA << SDA
 [2] ASPDF >> ASPDF
 [4] RV >> RV
 [4] GY >> GY
 [4] BU >> BU
 [4] TV >> TV
 [4] RGB/CVBS >> RGB/CVBS
 [2] HSYNCS >> HSYNCS
 [2] VSYNCS >> VSYNCS

ACLK R142 33 SACLK
 ALRCK R144 33 SLRCK
 ASDAT0 R146 33 SDAT0
 ASDAT1 R148 33 SDAT1
 ASDAT2 R150 33 SDAT2



HARDWARE: IIS 24BIT

CIRCUITO SAÍDA ÁUDIO PCI PRINCIPAL
8 CONEC (DRIVE CD5954)

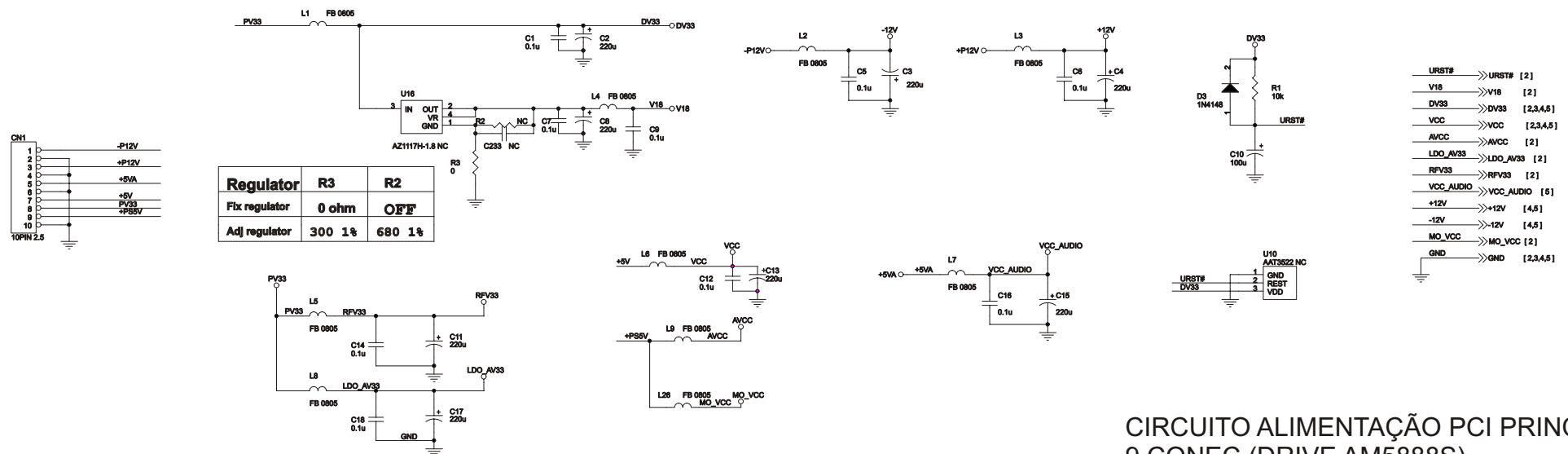


VTREK89DM6-11.1

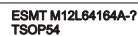
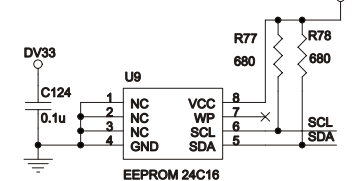
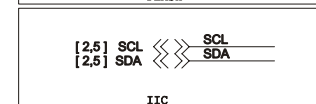
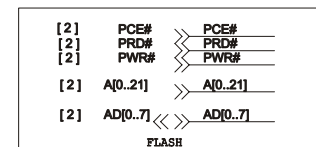
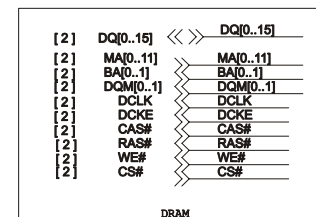
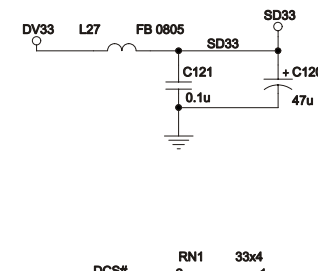
MT1389E DVD Demo Board for SONY KHM310 PUH

- 1 INDEX & POWER, RESET
- 2 RF / SERVO - MT1336E
- 3 MPEG - MT1379E
- 4 MEMORY - SDRAM, FLASH/EEPROM
- 5 AUDIO - WM8746, VIDEO FILTER

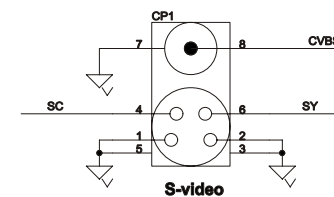
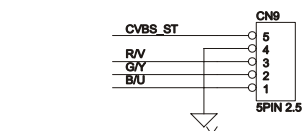
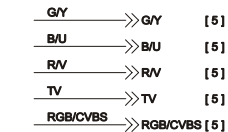
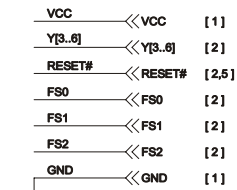
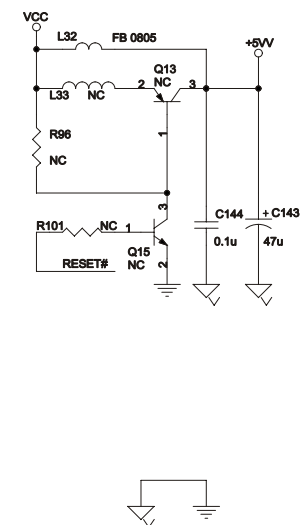
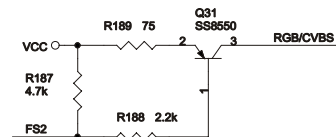
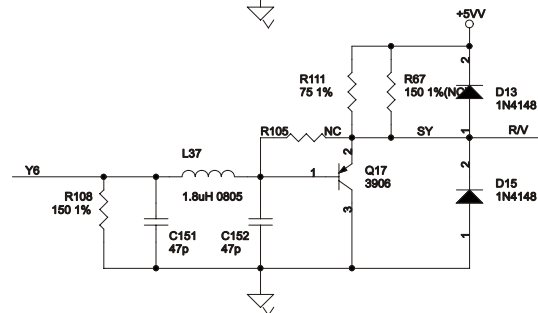
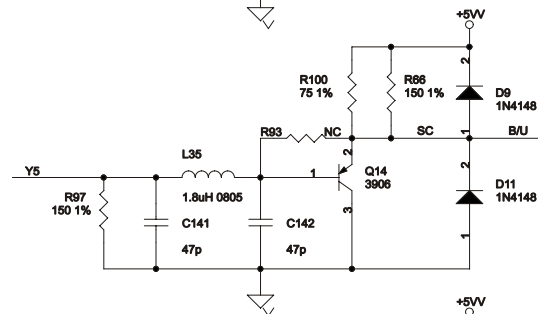
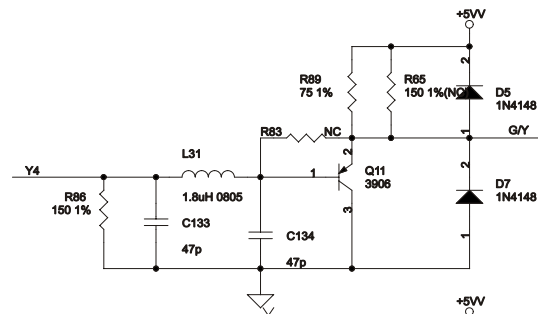
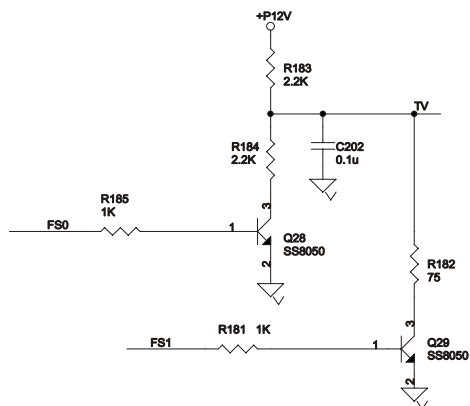
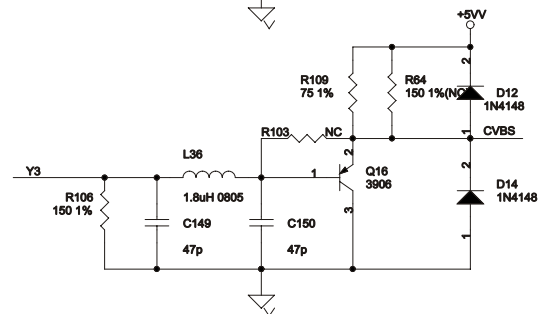
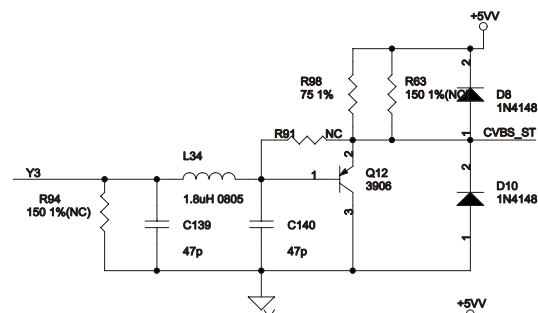
NAME	TYPE	DEVICE
VCC	Digital 5V	SUPPLY
DV33	Digital 3.3V	MT1389E
RFV33	Servo 3.3V	MT1389E
LDO_AV33	Laser Diode 3.3V	
AVCC	RF 5V	PICKUP HE ADER
V18	Digital 1.8V	MT1389E
SD33	Digital 3.3V	SDRAM
+12V	Audio +12V	OP AMP.
-12V	Audio -12V	OP AMP.
AVDD	Audio 5V	Audio DAC
DVDD	Audio 5V	Audio DAC



CIRCUITO ALIMENTAÇÃO PCI PRINCIPAL
9 CONEC (DRIVE AM5888S)



Página 14/16



CIRCUITO SAÍDA VIDEO
PCI PRINCIPAL
9 CONEC (DRIVE AM5888S)

