

**D**

**V**

**D**

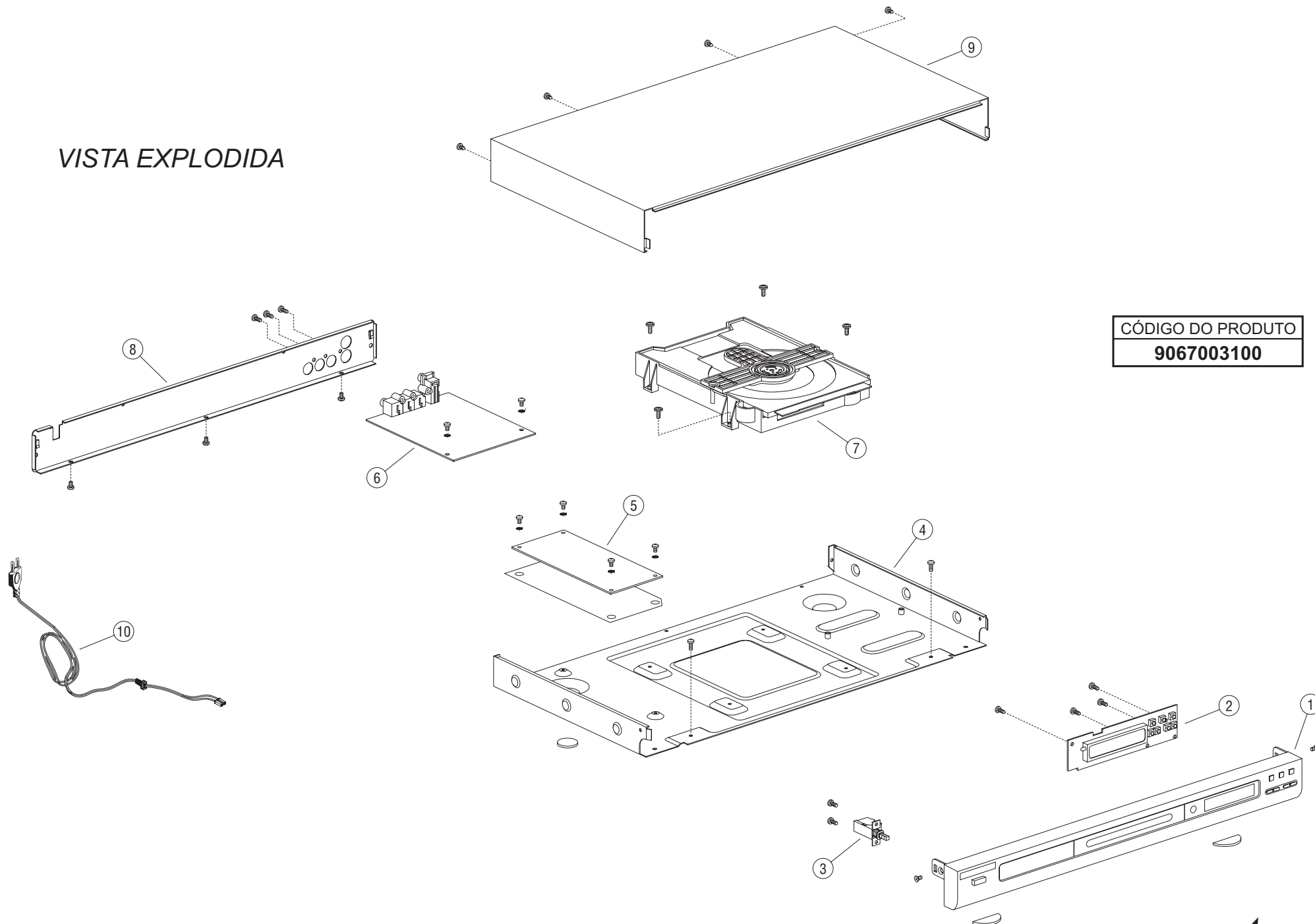
**1**

**0**

**0**

**0**

VISTA EXPLODIDA



CÓDIGO DO PRODUTO  
9067003100

### ITENS DA VISTA EXPLODIDA

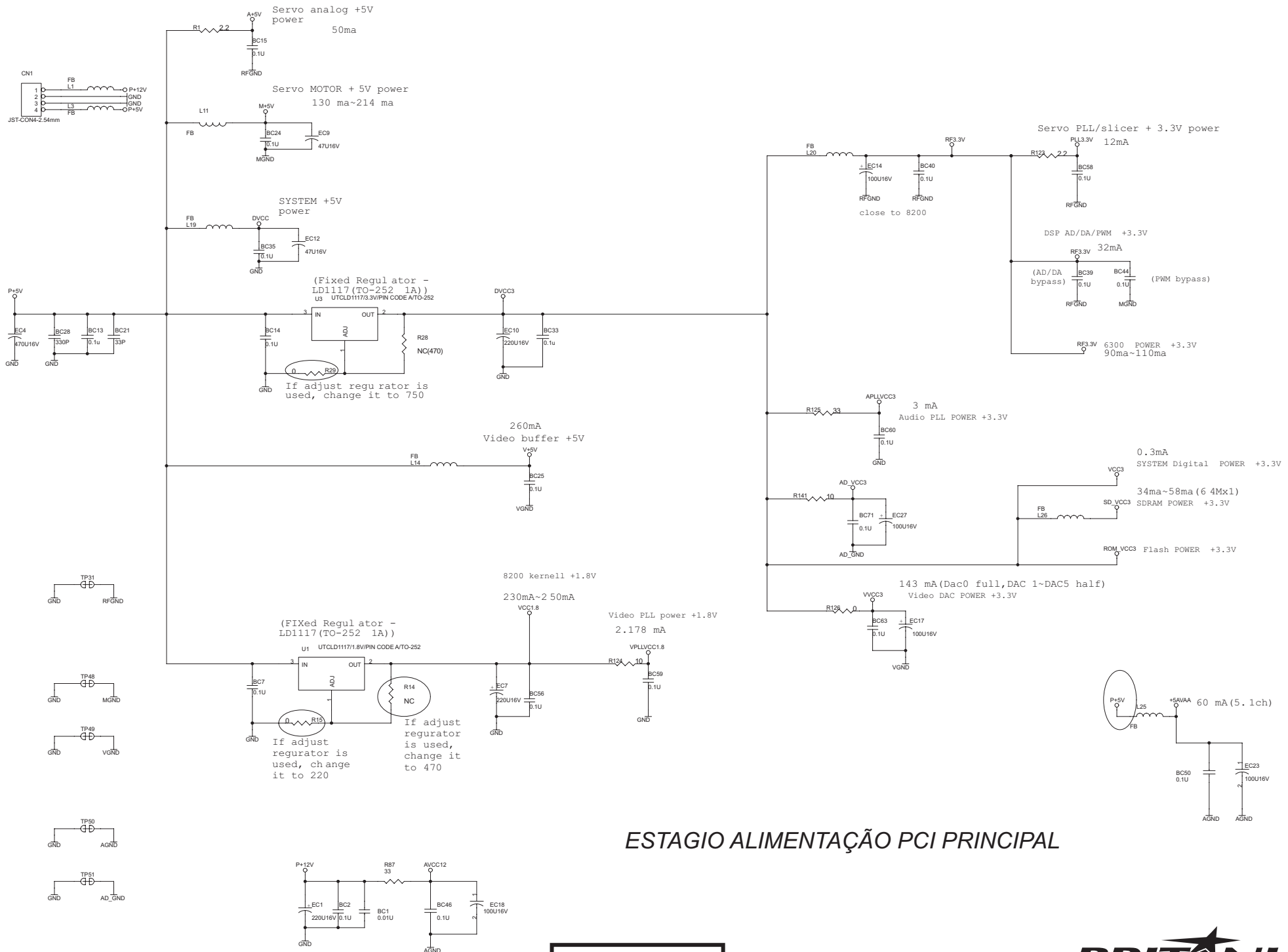
| Nº | DESCRIÇÃO                             | CÓDIGO |
|----|---------------------------------------|--------|
| 1  | GABINETE FRONTAL DVD1000              | 702895 |
| 2  | PCI DISPLAY/TECLADO DVD1000 (R)       | 702893 |
| 3  | CHAVE POWER DVD500/1000               | 702314 |
| 4  | GABINETE INFERIOR DVD1000             | 702897 |
| 5  | PCI FONTE DVD500/MATRIX10/1000 (R)    | 701928 |
| 6  | PCI PRINCIPAL CX96-8M(4M) DVD1000 (R) | 702890 |
| 7  | MECANISMO DVD L811 DVD1000 (R)        | 702891 |
| 8  | GABINETE TRASEIRO DVD1000             | 702896 |
| 9  | GABINETE SUPERIOR DVD1000             | 702898 |
| 10 | CORDÃO ELETRICO DVD PADRÃO            | 701613 |

**NOTA:**

Dos itens da página anterior, somente aqueles que possuem códigos relacionados nas tabelas serão fornecidos.

### DEMAIS COMPONENTES FORNECIDOS

| DESCRIÇÃO                        | CÓDIGO | LOCALIZAÇÃO |
|----------------------------------|--------|-------------|
| CIRC. INT. 4558 (R)              | 701907 | U6          |
| CIRC. INT. CMD 5954              | 702305 | U4          |
| CIRC. INT. CS4334 (R)            | 701906 | U11         |
| CIRC. INT. EN29F040A             | 702301 | U7          |
| CIRC. INT. MEMORIA EM 636165TS-7 | 702303 | U14         |
| CIRC. INT. MV 37139              | 702900 | U2          |
| CIRC. INT. PJ 1117               | 702299 | U1,U2       |
| CIRC. INT. SPHE 8200A            | 702300 | U8          |
| CIRC. INT. TP6312F(DISPLAY)      | 701904 |             |
| CIRC. INTEG. 24LLCO2             | 702326 | U5          |
| CONTROLE REMOTO DVD1000          | 702899 |             |
| CORREIA MECANISMO DVD L811       | 702894 |             |
| CRISTAL 27MHZ                    | 702307 |             |
| DIODO SB360                      | 701915 |             |
| FLAT CABLE 24VIAS 1,2CM X 23CM   | 702892 |             |
| TRANSISTOR B.A.R.Y.              | 702306 | Q4,Q6       |

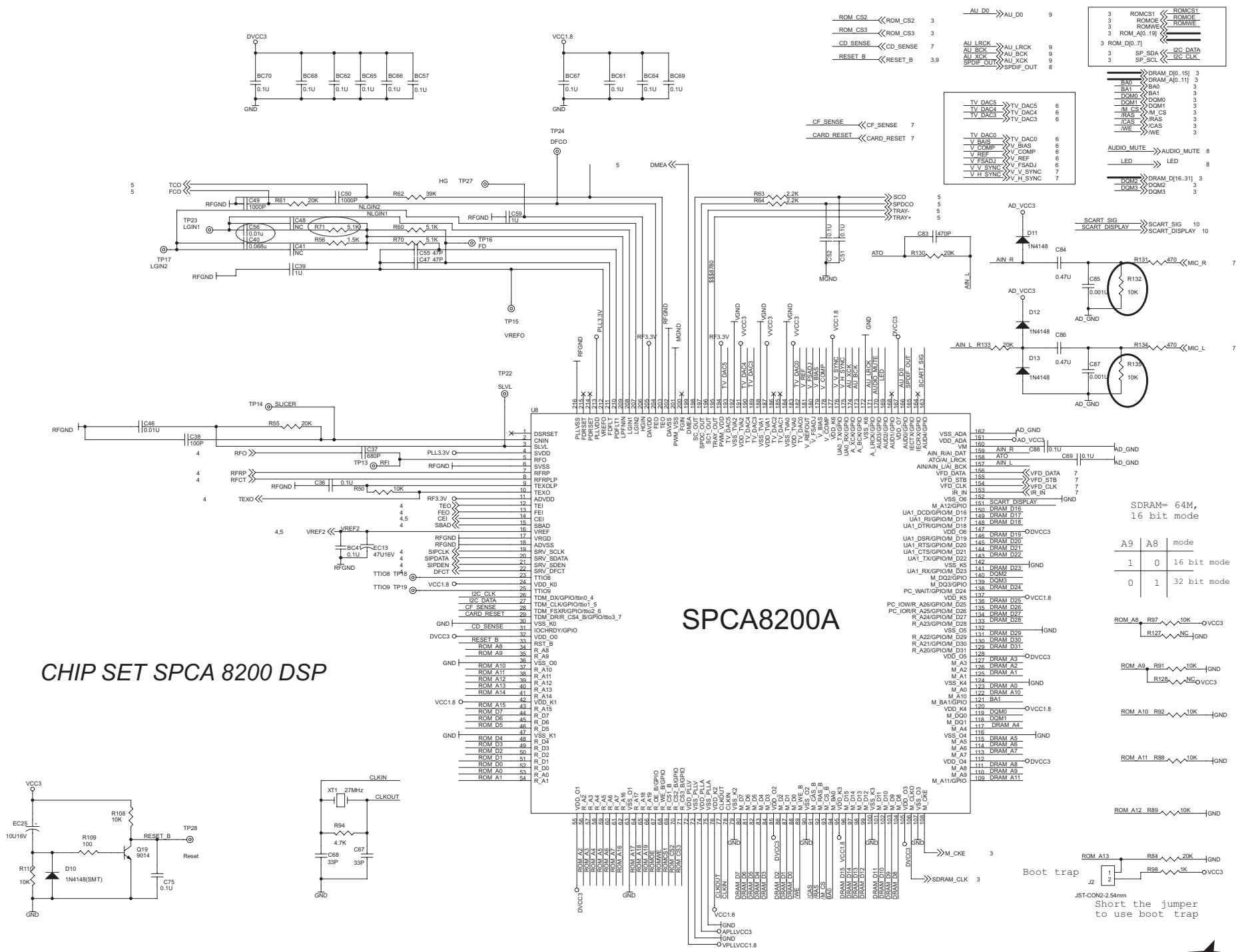


## ESTAGIO ALIMENTAÇÃO PCI PRINCIPAL

**DVD-1000**

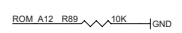
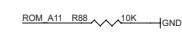
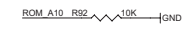
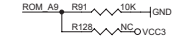
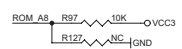
# CHIP SET SPCA 8200 DSP

# SPCA8200A



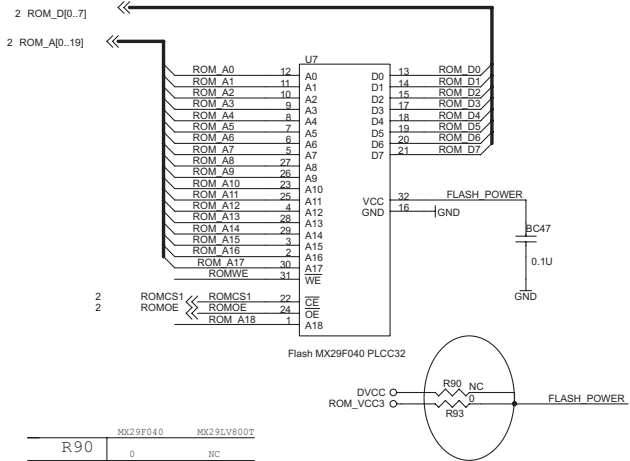
SDRAM= 64M,  
16 bit mode

| A9 | A8 | mode        |
|----|----|-------------|
| 1  | 0  | 16 bit mode |
| 0  | 1  | 32 bit mode |



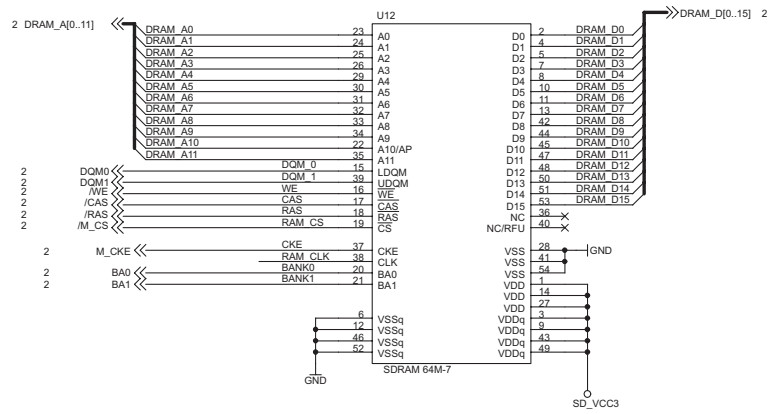
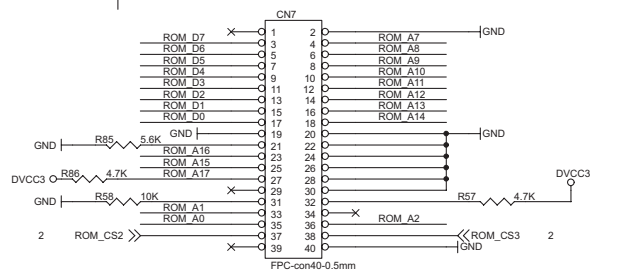
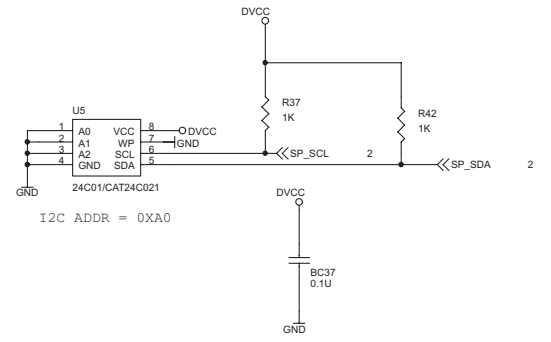
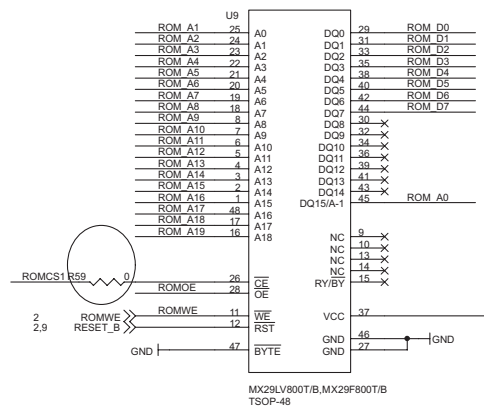
Short the jumper to use boot trap



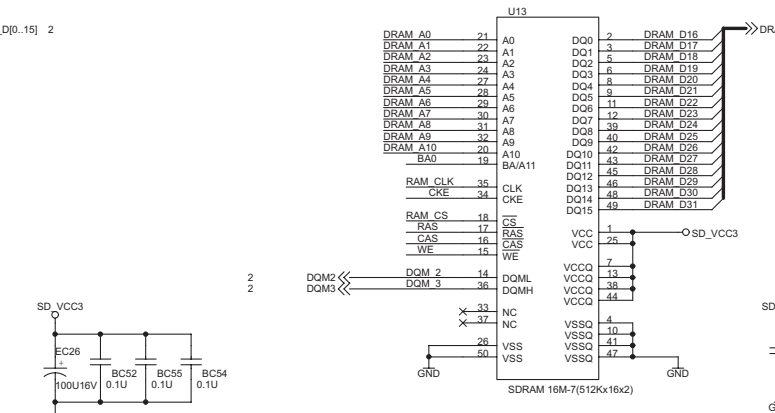
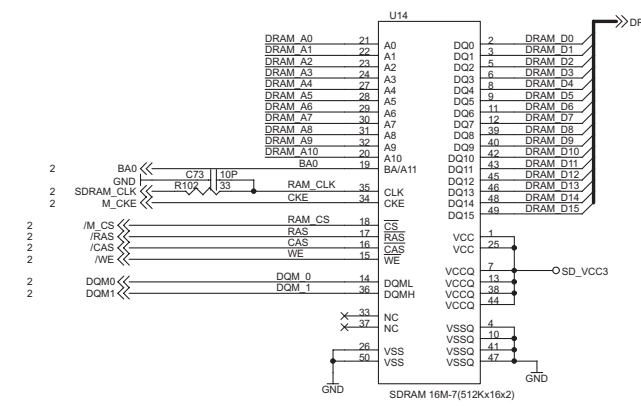


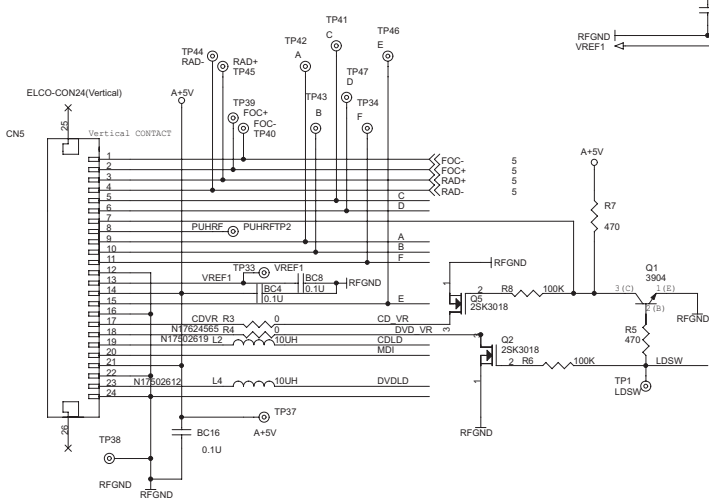
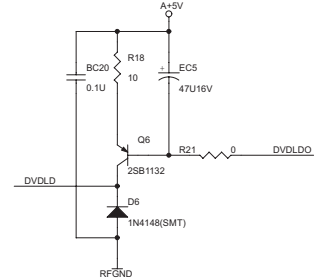
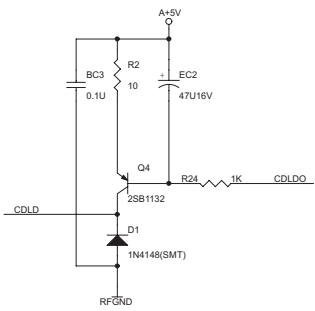
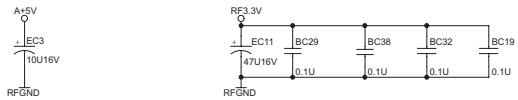
|     | MX29F040 | MX29LV800T |
|-----|----------|------------|
| R90 | 0        | NC         |
| R93 | NC       | 0          |

If MX29LV800T is used, R93 is 0, R90 is open



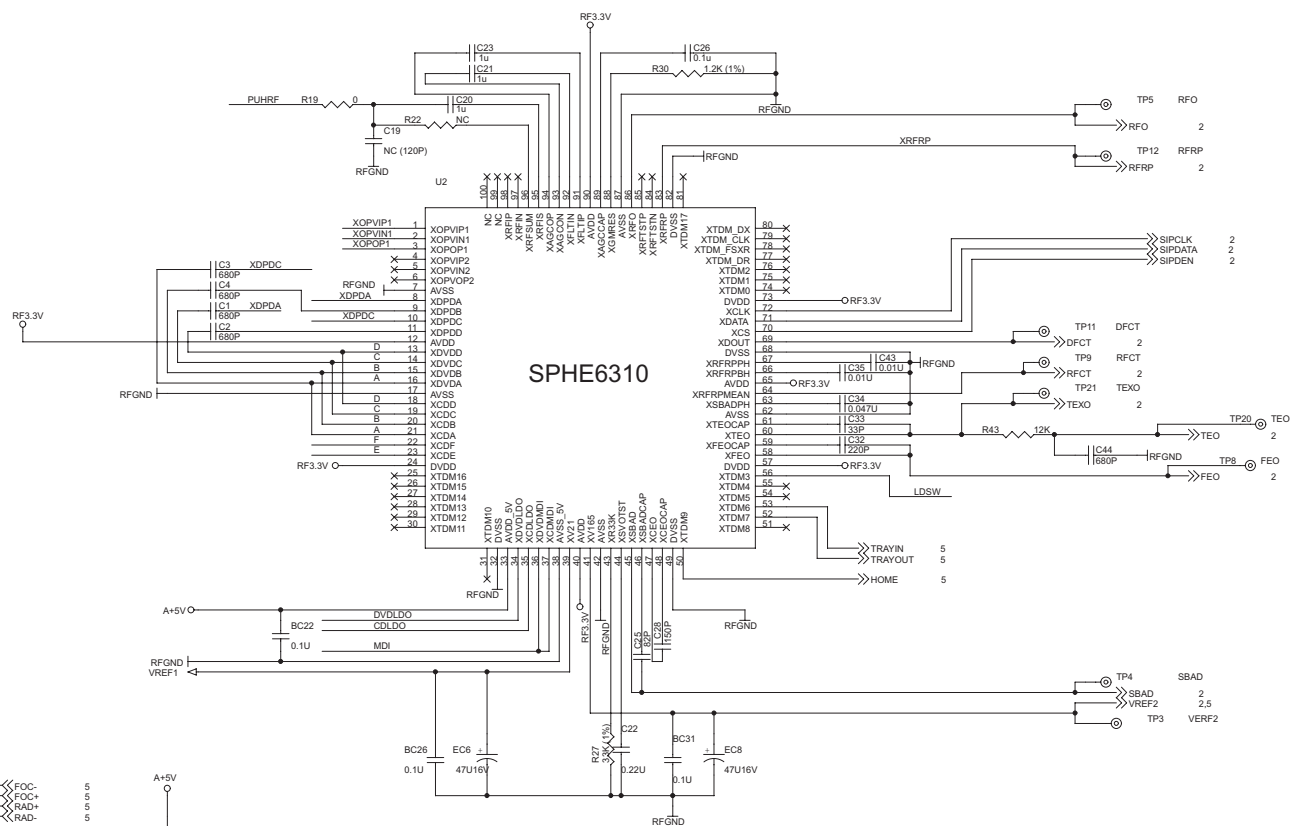
## MEMORIAS FLASH E SDRAM





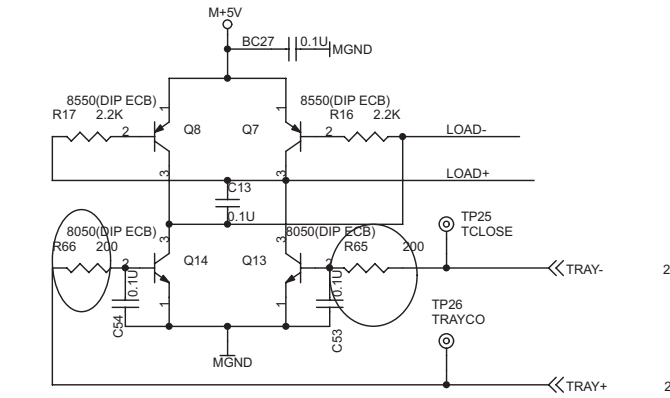
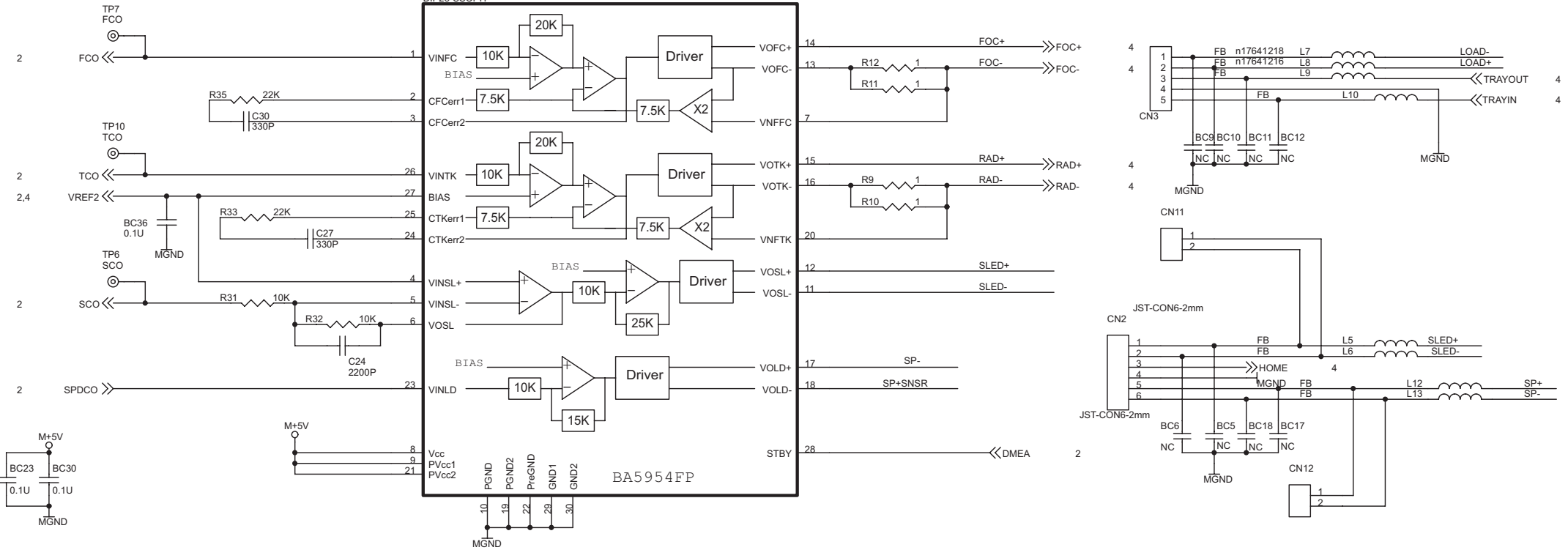
|           |      |           |               |
|-----------|------|-----------|---------------|
| CDVR      | TP35 | MDI       | TP30          |
| CD_VR     | TP32 | N17502612 | TP29 @ DVDLDO |
| N17502619 | TP32 | N17624565 | TP36          |
| CDLD      | TP32 |           | DVD_VR        |

|         |         |     |
|---------|---------|-----|
| XOPVIP1 | XOPVIP1 | 5   |
| XOPVIN1 | XOPVIN1 | 5   |
| XOPPOP1 | XOPPOP1 | 2,5 |

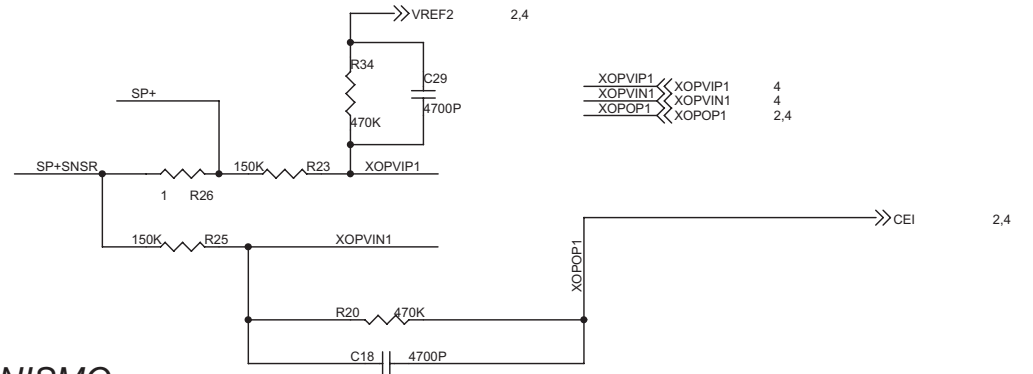


**PRÉ-AMPLIFICADOR**

U4  
BA5954FP / CMD5954  
DIP28-SSOPH



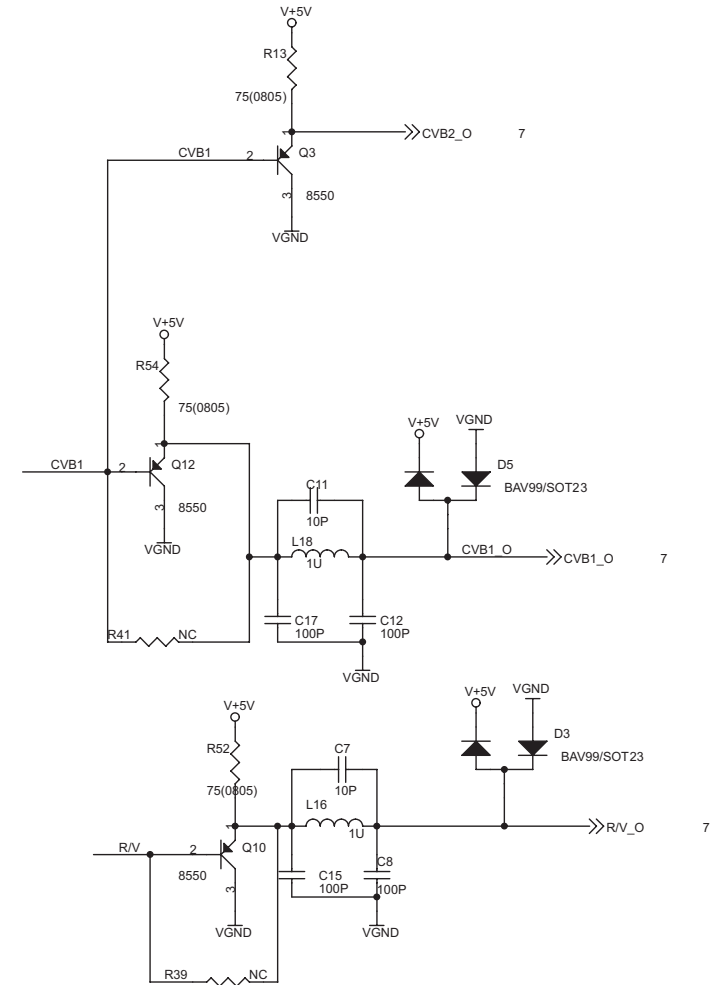
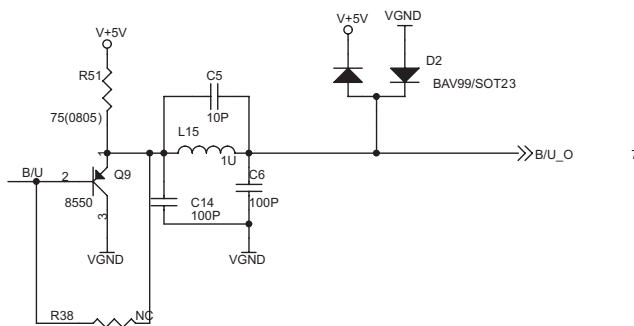
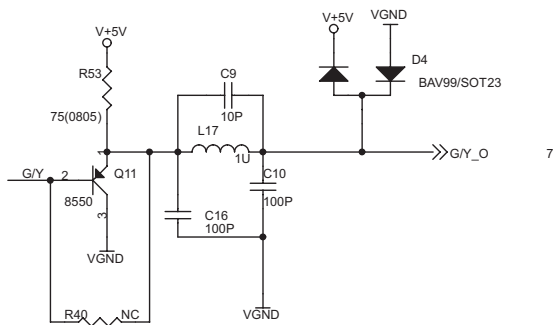
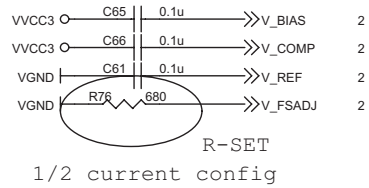
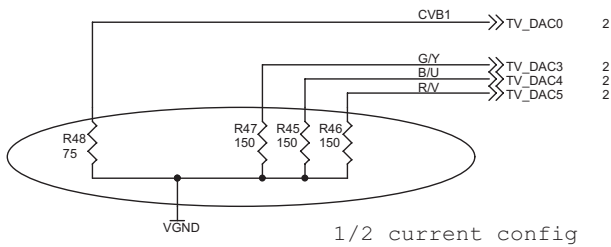
### DRIVER MECANISMO

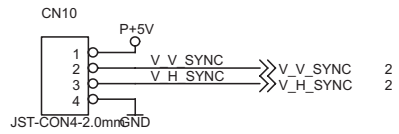


For DC motor

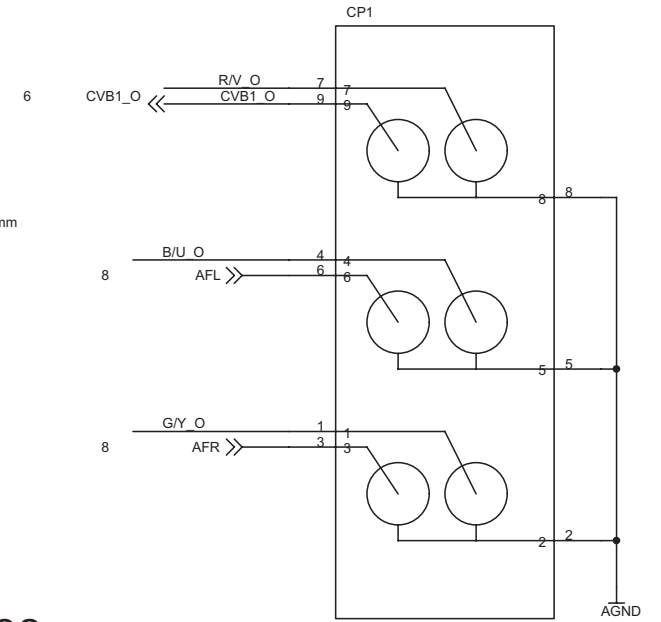
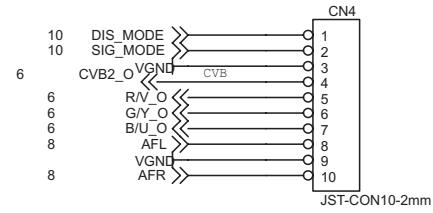
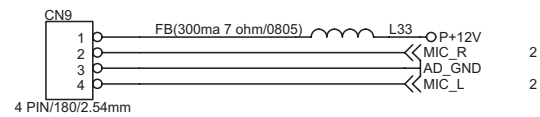
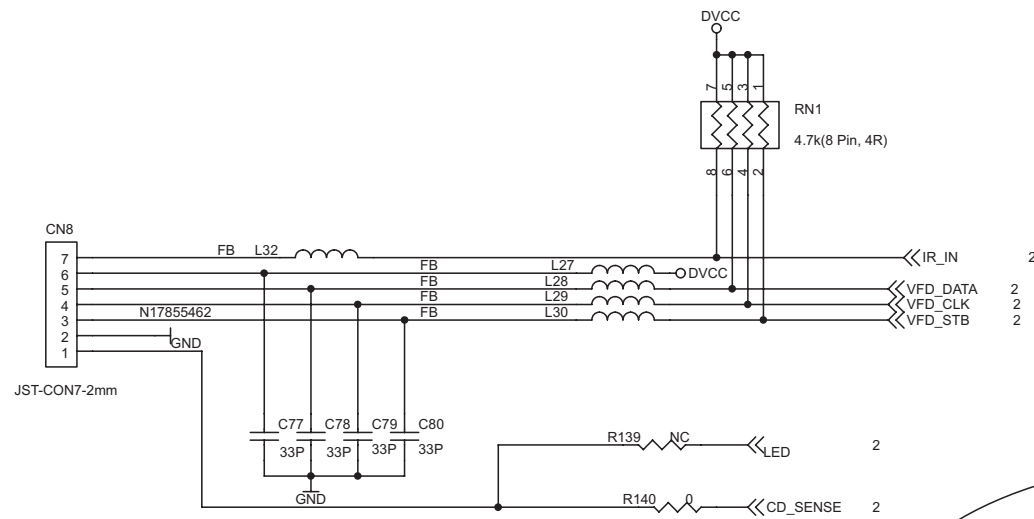
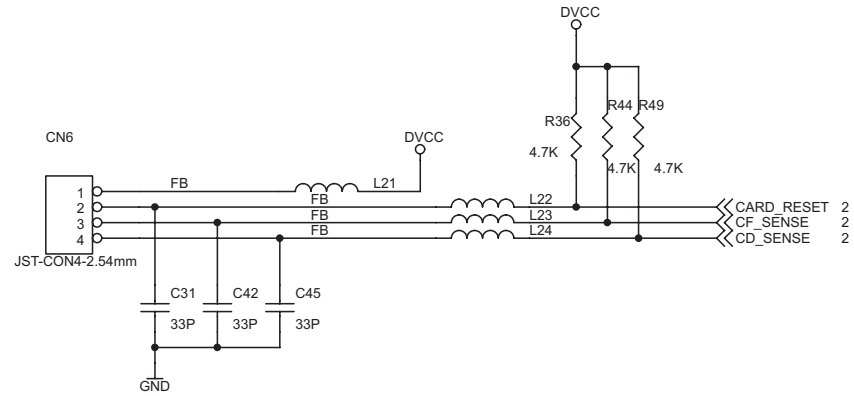


# BUFFER SINAL DE VÍDEO



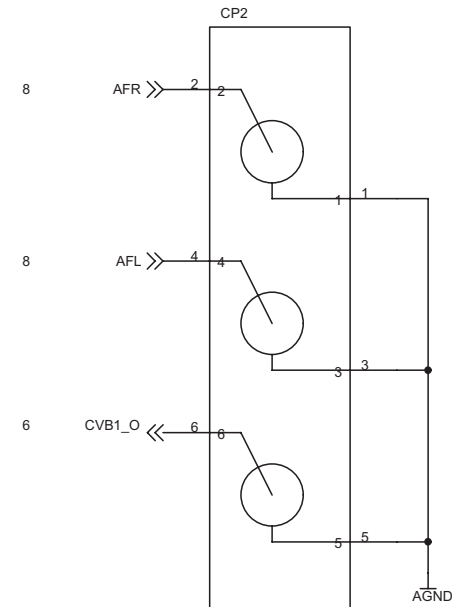
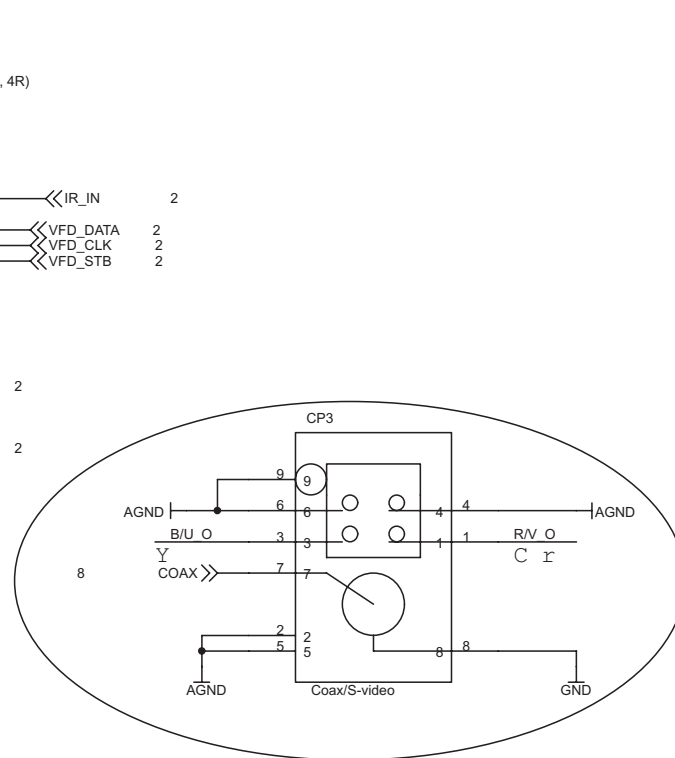


Debug Port

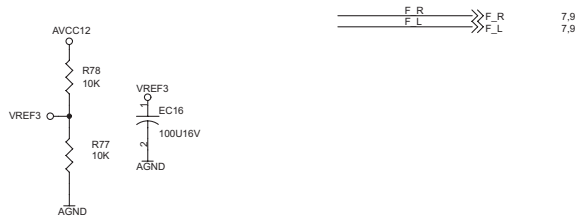


A-JACK-2X3

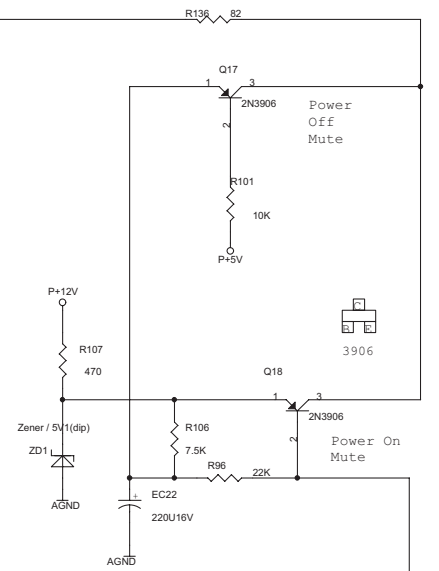
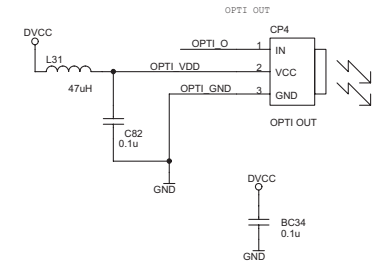
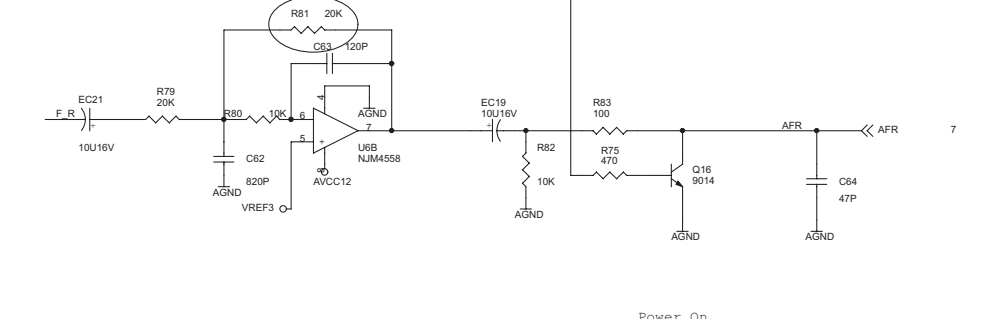
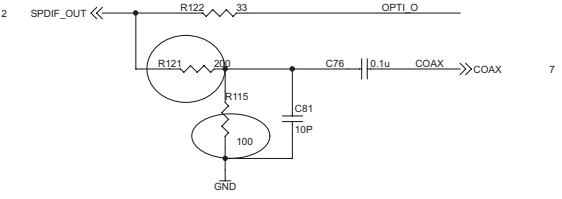
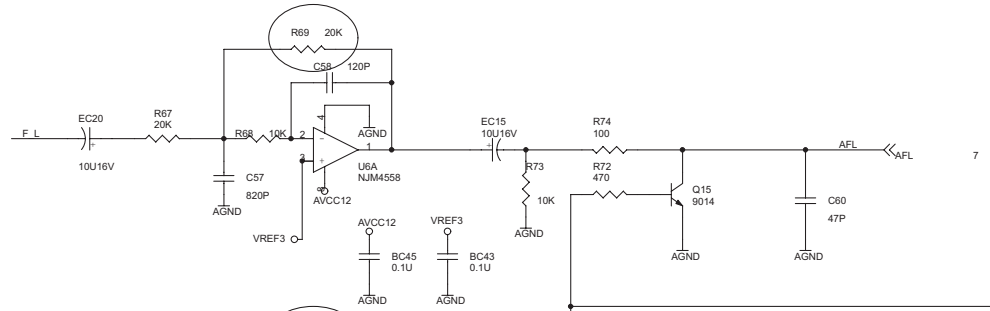
## CONECTORES E PINOS



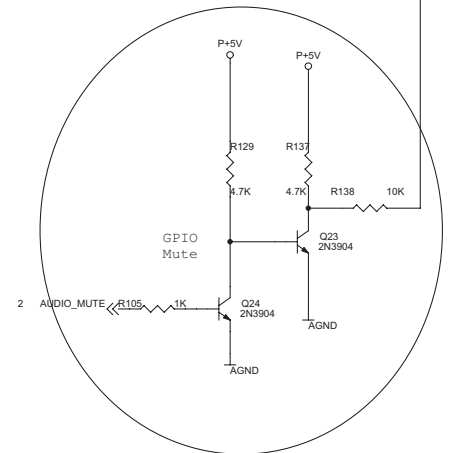
A-JACK-1X3



F\_R F\_L 7.9  
F\_L 7.9



### FILTROS DE AUDIO E MUTE

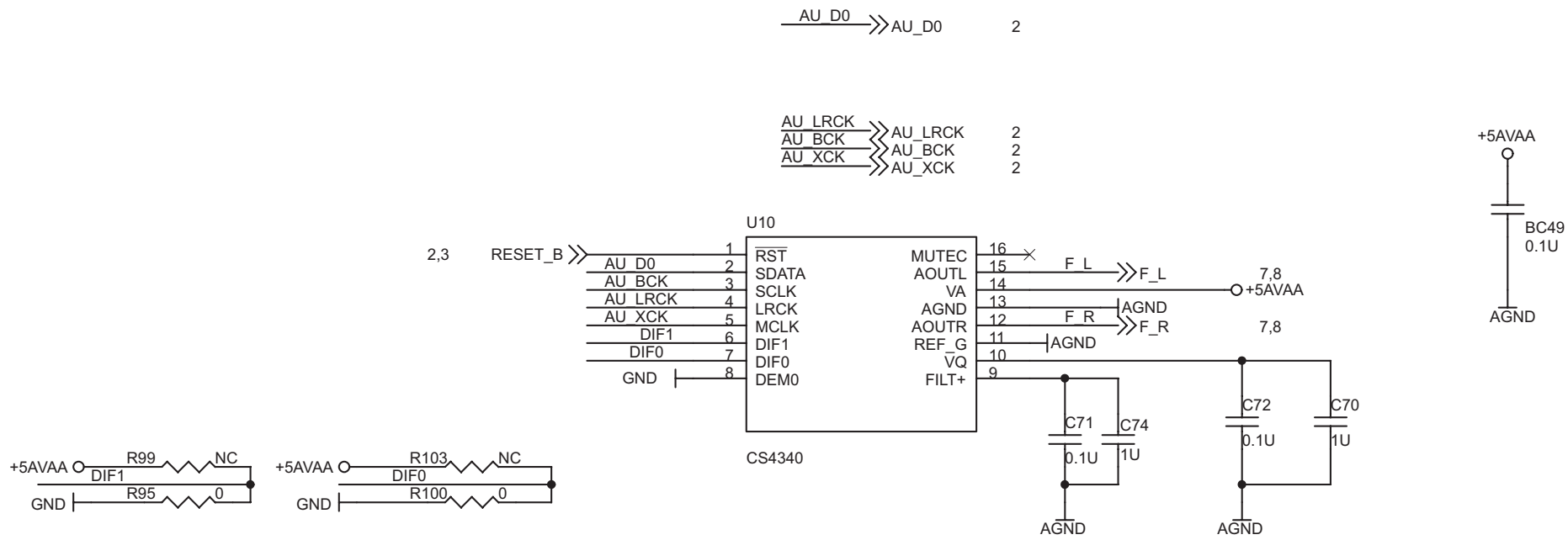


Scafield & Fielbas / Curitiba

mar/2005

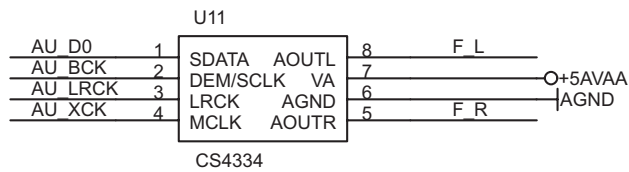
**DVD-1000**

**BRITANIA**  
ASSISTÊNCIA TÉCNICA

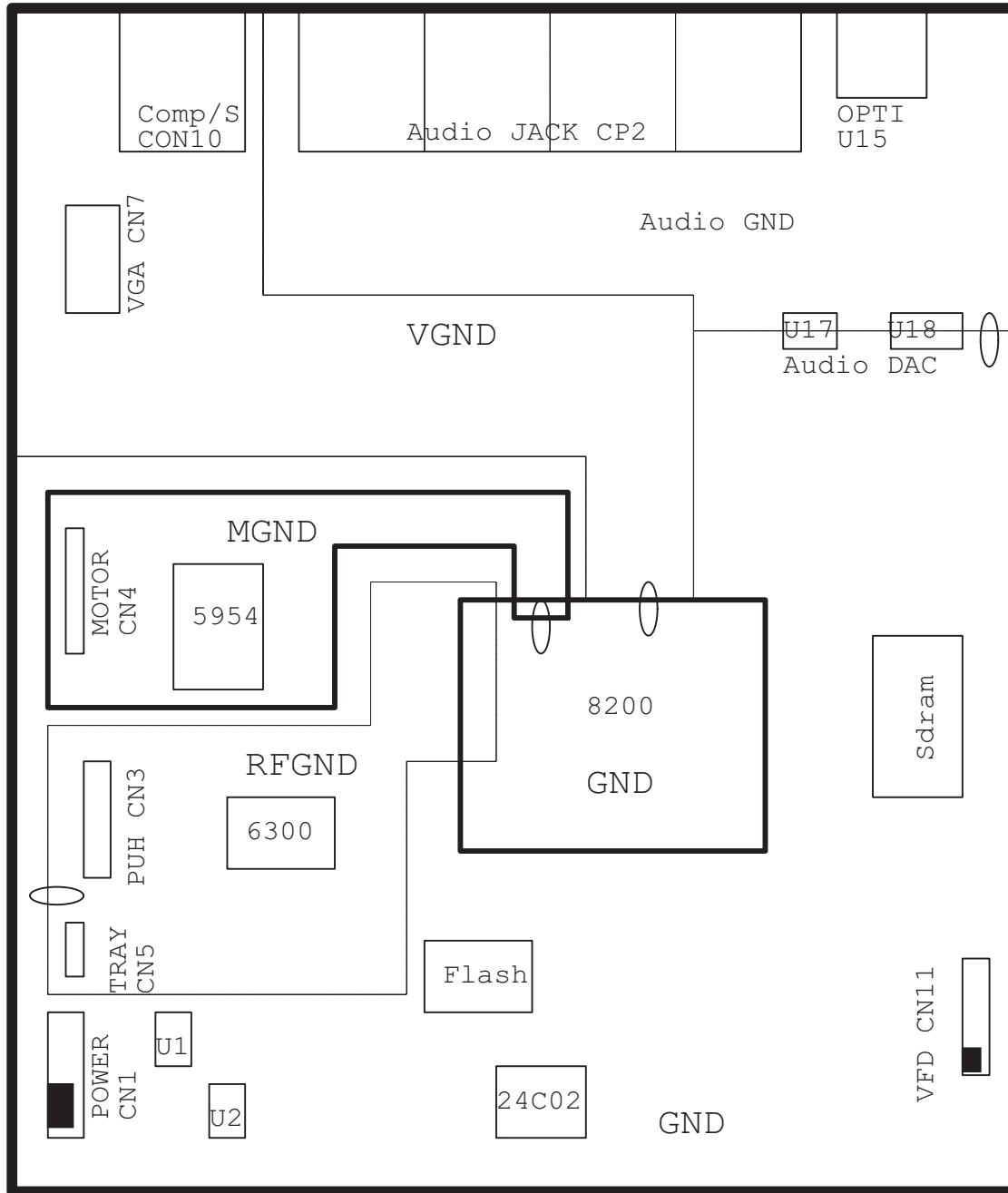


| DIF1 | DIF0 | AUDIO INTERFACE |
|------|------|-----------------|
| 0    | 0    | I2S             |
| 0    | 1    | LJ 24 bits      |
| 1    | 0    | RJ 24 bits      |
| 1    | 1    | RJ 16 bits      |

### AUDIO DAC

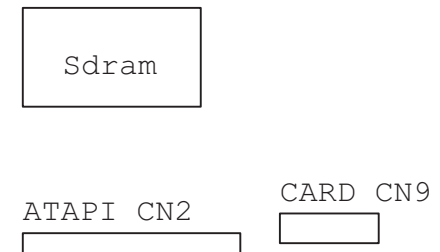


CS4334 I2S format only



| Audio Channel | Description            |
|---------------|------------------------|
| F_L           | FRONT LEFT Channel     |
| F_R           | FRONT Right Channel    |
| ASL           | Surround Left Channel  |
| ASR           | Surround RIGHT Channel |
| AC_C          | Center Channel         |
| ASW           | Sub-Woofer Channel     |
| COAX          | SPDIF COAX OUTPUT      |

| Video Channel | Description         |
|---------------|---------------------|
| B/U_O         | Video B or U output |
| G/Y_O         | Video G or Y output |
| R/V_O         | Video R or V output |



LAYOUT PCI PRINCIPAL  
EM DIAGRAMAS DE BLOCOS