

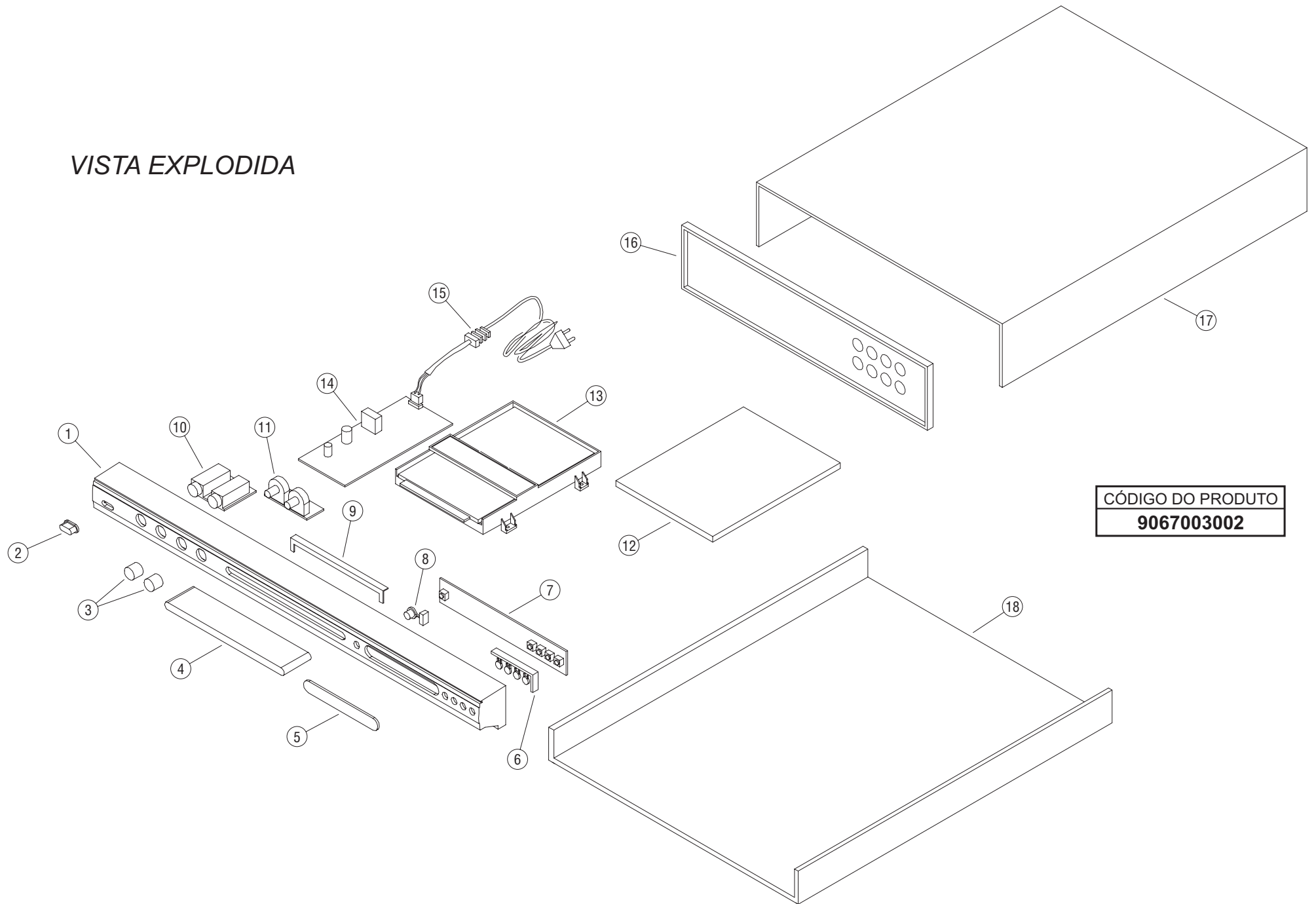
**M
a
t
r
i
x

P
l
u
s**

**D
V
D

K
a
r
a
o
k
ê**

VISTA EXPLODIDA



CÓDIGO DO PRODUTO
9067003002

ITENS DA VISTA EXPLODIDA

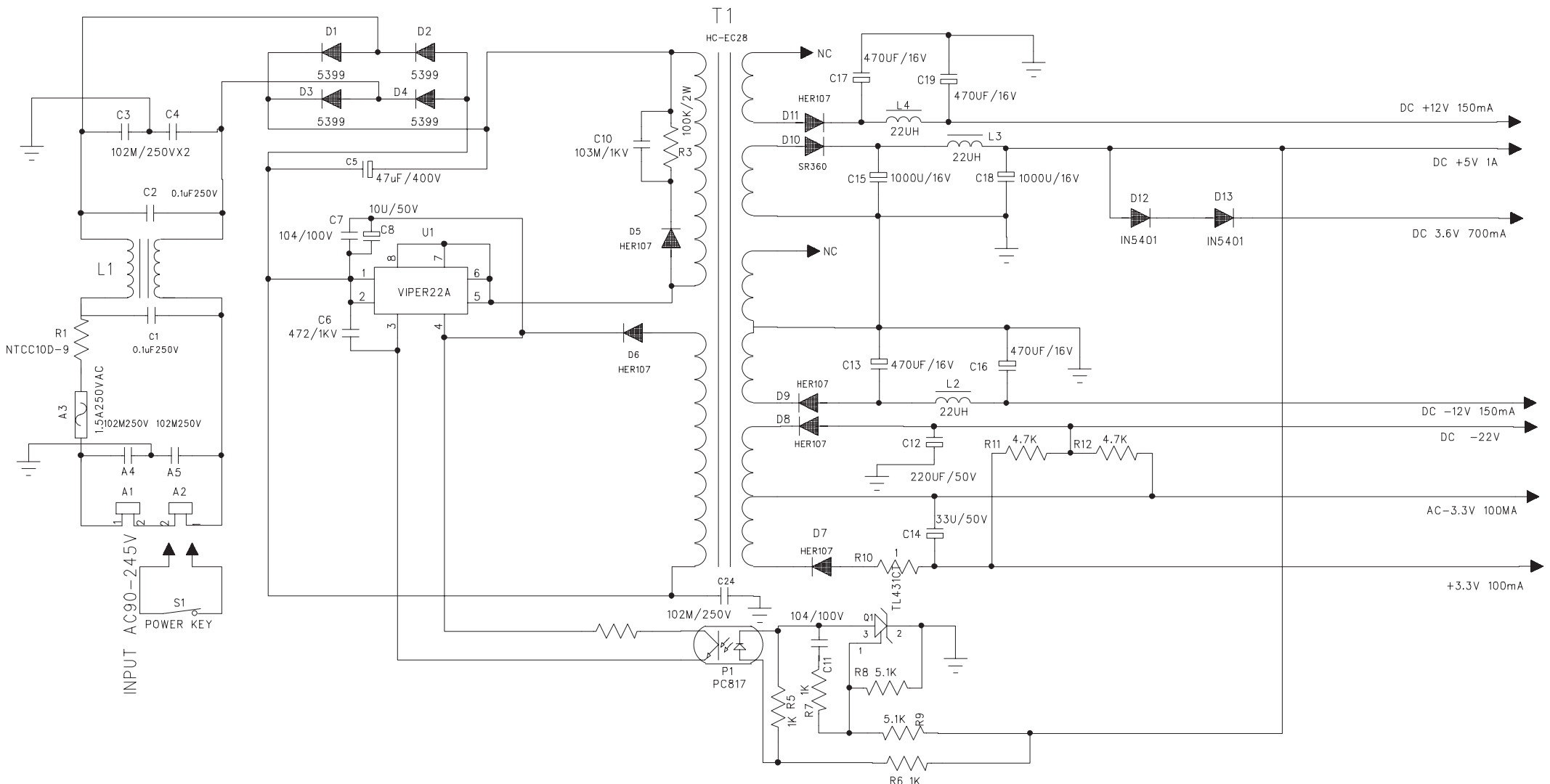
Nº	DESCRIÇÃO	CÓDIGO
1	GABINETE FRONTAL MATRIX PLUS	702089
2	KNOB POWER MATRIX PLUS	703234
3	KNOB MICROFONE MATRIX PLUS	703233
4	PROTEÇÃO GAVETA MATRIX PLUS	703236
5	VISOR DISPLAY MATRIX PLUS	703239
6	BOTOES COMANDOS MATRIX PLUS	702073
7	PCI DISPLAY/TECLADO DVD MATRIX PLUS (R)	702085
8	BOTAO OPEN MATRIX PLUS	702072
9	REFORÇO GABINETE FRONTAL MATRIX PLUS	703237
10	PCI JACK MICROFONES MATRIX PLUS (R)	702083
11	PCI VOLUME MICROFONE MATRIX PLUS (R)	702084
12	PCI PRINCIPAL C/ KARAOKÊ DVD MATRIX PLUS (R)	702061
13	MECANISMO DVD MATRIX PLUS (R)	702060
14	PCI FONTE DVD3600/MATRIX PLUS (R)	702062
15	CORDÃO FORÇA	702063
16	GABINETE TRASEIRO MATRIX PLUS	703232
17	GABINETE SUPERIOR DVD 3600/MATRIX PLUS	703231
18	GABINETE INFERIOR MATRIX PLUS	703230

NOTA:

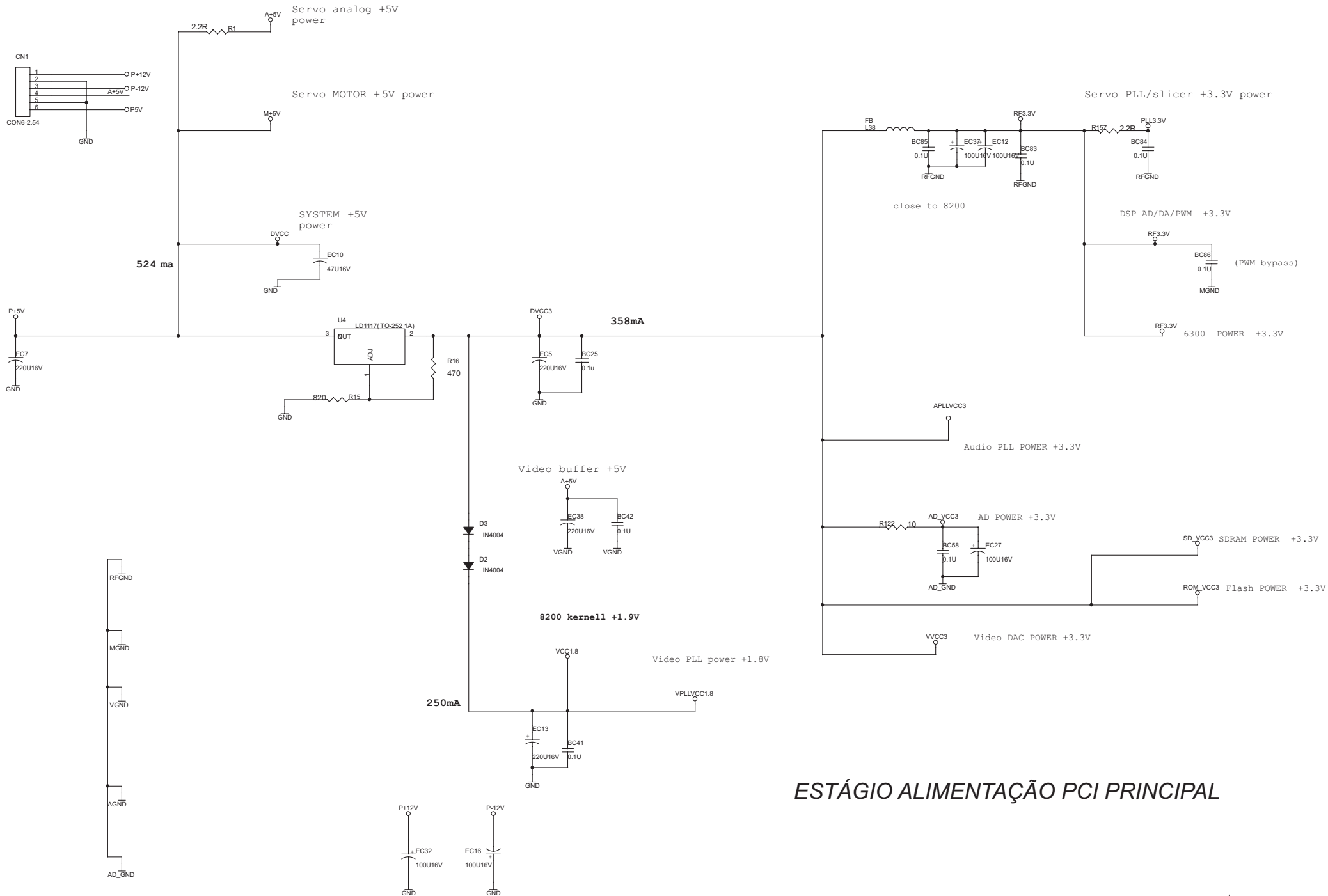
Dos itens da página anterior, somente aqueles que possuem códigos relacionados nas tabelas serão fornecidos.

DEMAIS COMPONENTES FORNECIDOS

DESCRIÇÃO	CÓDIGO
CHAVE POWER MATRIX PLUS/DVD3600	702070
CIRC. INT. 24 C02N	702074
CIRC. INT. BA 4522E	702075
CIRC. INT. F435	702076
CIRC. INT. F4558	701907
CIRC. INT. MEMORIA EPROM MJ 118/A290440B-70	702077
CIRC. INT. MEMORIA HY57V561620HG	702078
CIRC. INT. PC817	701633
CIRC. INT. SA5954 (DRIVE)	702305
CIRC. INT. SPHE 6300A	702079
CIRC. INT. SPHE 8200A	702300
CIRC. INT. WM 8741ED	702086
CONTROLE REMOTO MATRIX PLUS	702080
CRISTAL 87MHZ	702087
FLAT CABLE 24VIAS 1,2 CMX2,0 CM	702088
POTENCIOMETRO 10K MATRIX PLUS	703235
TRANSISTOR 1117A	703238
TRANSISTOR S 8050D	700105
TRANSISTOR S 8550D	700106
TRANSISTOR S 9014C	700935



ESTÁGIO FONTE DE ALIMENTAÇÃO



ESTÁGIO ALIMENTAÇÃO PCI PRINCIPAL

Scafield & Freitas / Curitiba

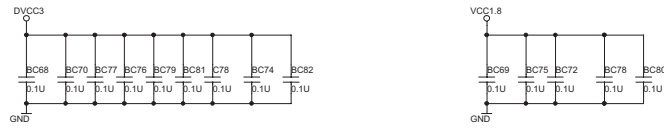
mar/2005

CHIP SET SPCA 8200A DSP

SPCA8200A

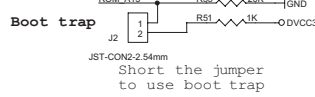
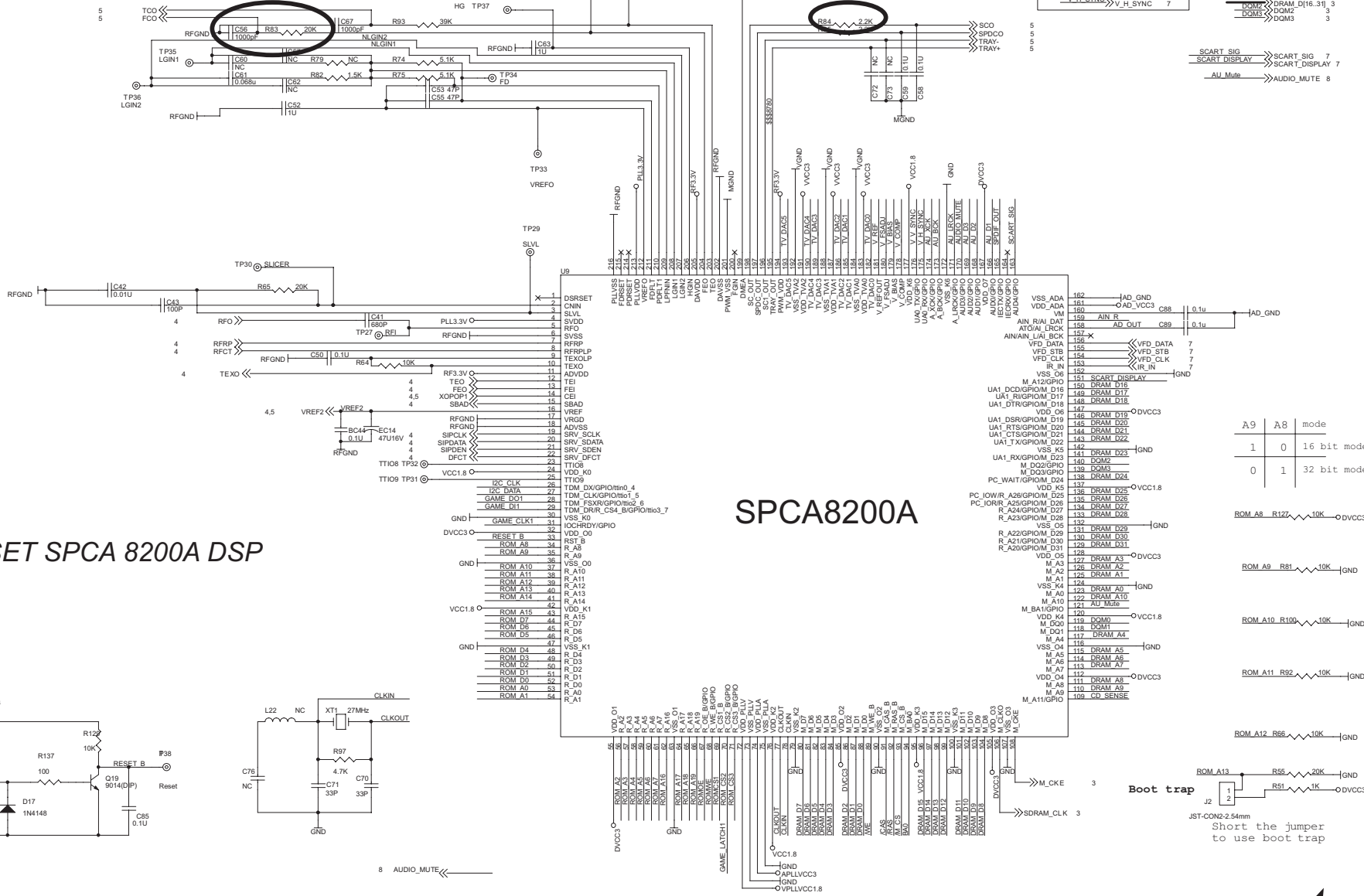
	R93	C67
SANYO	39K	1000P
SAMSUNG	39K	1000P
MITSUMI	39K	1000P
SONY 310	39K	1000P
THOMSON	12K	1500P

	R83	C56
SANYO	20K	1000P
SAMSUNG	3.3K	2700P
MITSUMI	3.3K	2700P
SONY 310	10K	1500P
THOMSON	3.3K	2700P

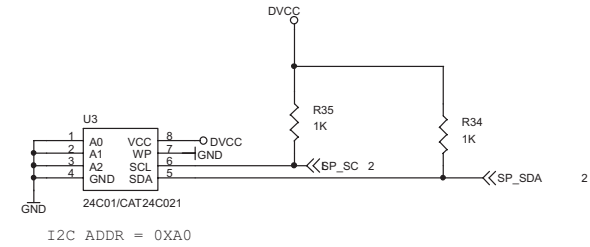
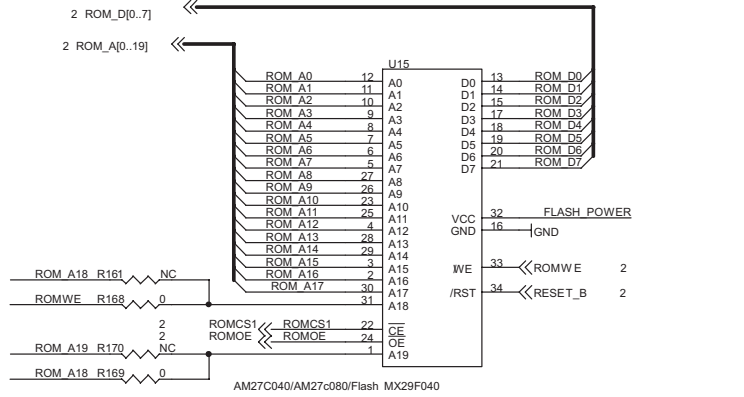


	R84
SANYO	2.2K
SAMSUNG	2.2K
MITSUMI	2.2K
SONY 310	20K
Thomson	15K

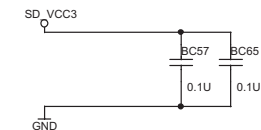
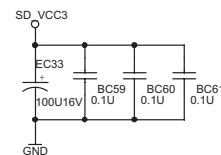
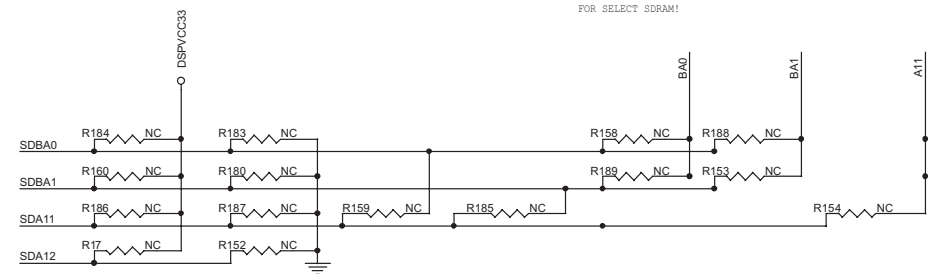
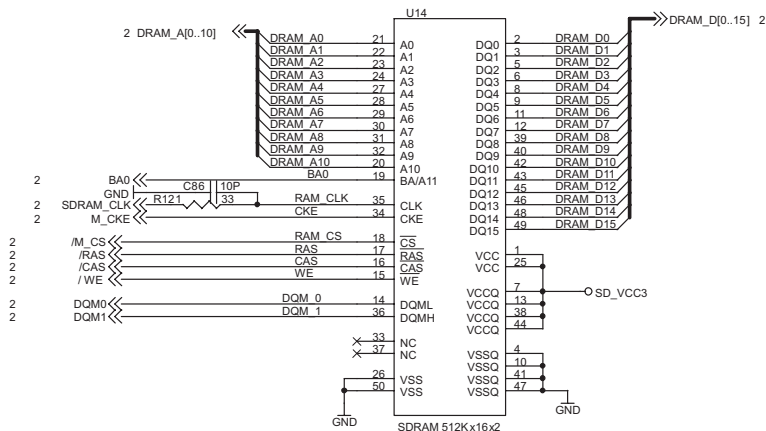
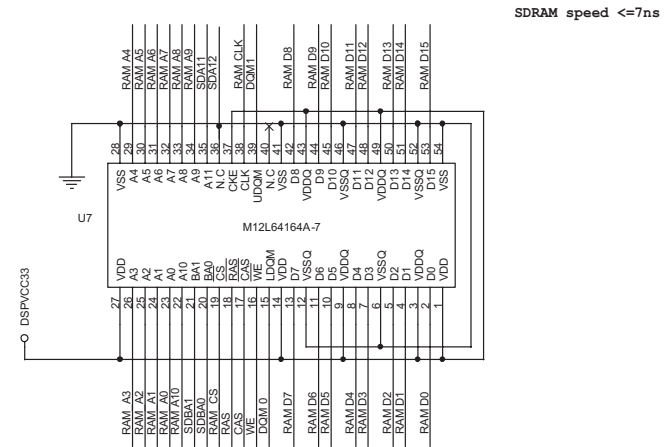
ROM_CS2	ROM_CS2	3	AU_D3	AU_D3	9
ROM_CS3	ROM_CS3	3	AU_D2	AU_D2	9
RESET_ATA	RESET_ATA	3	AU_D0	AU_D1	9
RESET_B	RESET_B	3	AU_D0	AU_D0	9
			AU_LRCK	AU_LRCK	9
			AU_BCK	AU_BCK	9
			AU_XCK	AU_XCK	9
			SPDIF_OUT	SPDIF_OUT	8
			DRAM_D0[15]	DRAM_D0[15]	3
			DRAM_A0[10]	DRAM_A0[10]	3
			BA0	BA0	3
			DOM0	DOM0	3
			DOM1	DOM1	3
			M_CS	M_CS	3
			CAS	CAS	3
			WE	WE	3
			DRAM_D16[31]	DRAM_D16[31]	3
			DOM2	DOM2	3
			DOM3	DOM3	3



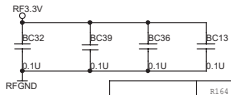
JST-CON3-2.54mm
Short the jumper to use boot trap



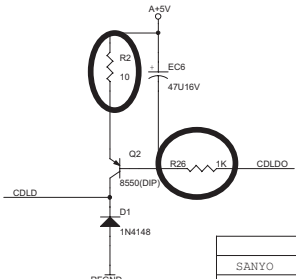
MEMÓRIAS FLASH E SDRAM



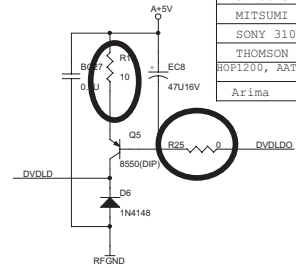
	R2	R18
SANYO	10	10
SAMSUNG	10	10
MITSUMI	10	10
SONY 310	10	4.7
THOMSON	10	10
HOP1200, AATek	10	10
Arima	10	10



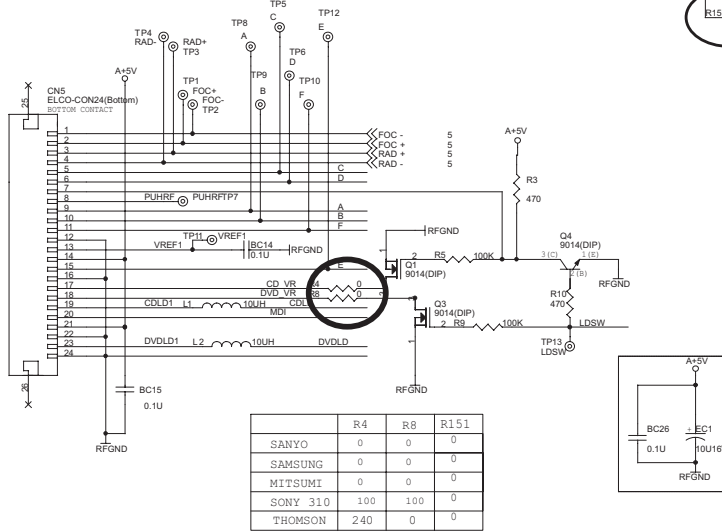
	R164	R165	R166	R167
SANYO	0	NC	0	NC
SAMSUNG	0	NC	0	NC
MITSUMI	NC	0	NC	0
SONY 310	0	NC	0	NC
THOMSON	0	NC	0	NC
HOP1200, AATek	0	NC	0	NC
Arima	0	NC	0	NC



	R26
SANYO	1k
SAMSUNG	1k
MITSUMI	1k
SONY 310	0
THOMSON	0
HOP1200, AATek	1k
Arima	1k

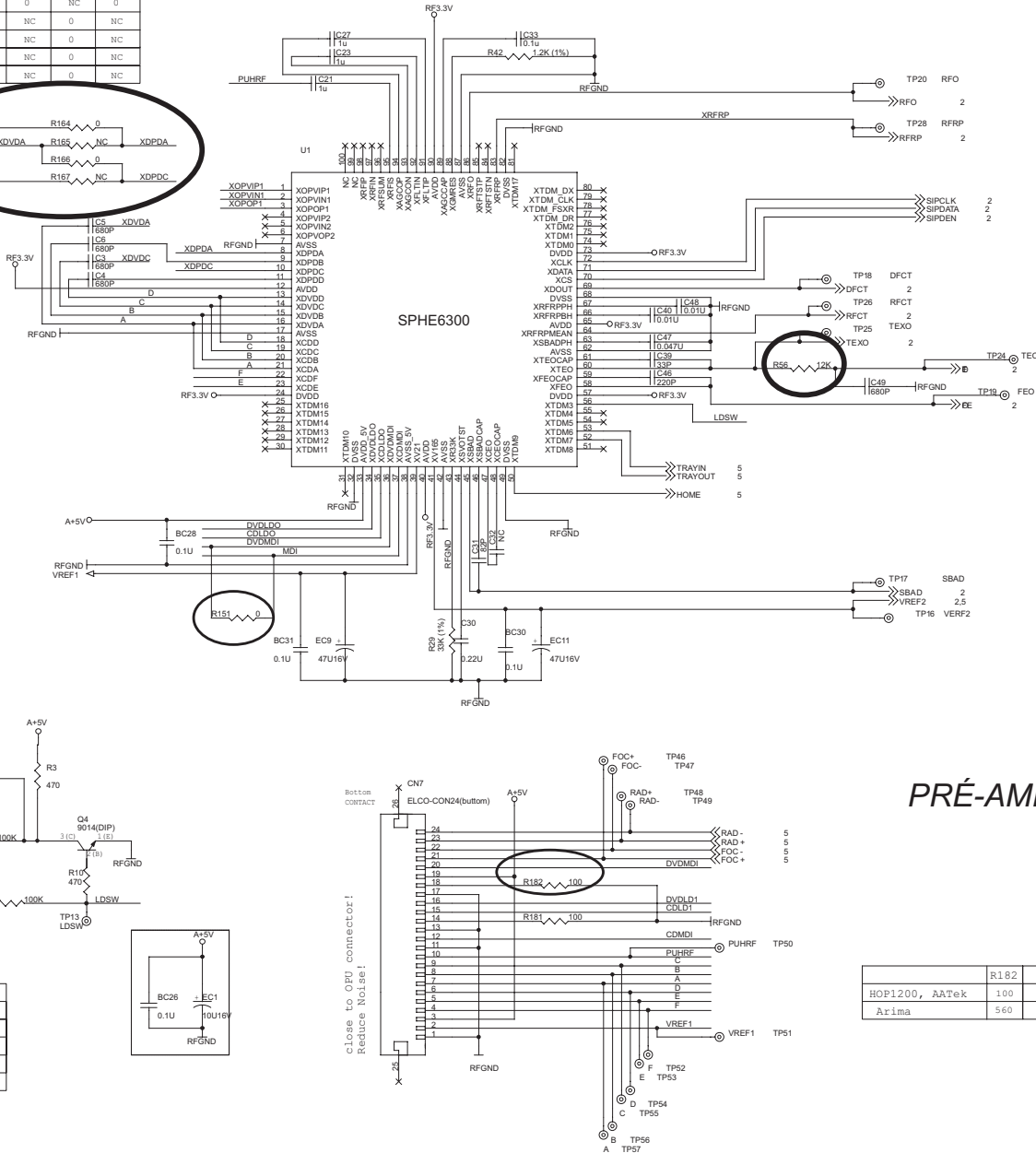
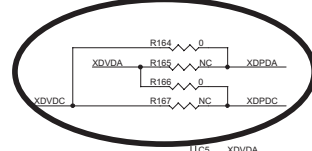


	R25
SANYO	0
SAMSUNG	0
MITSUMI	0
SONY 310	0
THOMSON	0
HOP1200, AATek	1k
Arima	1k



	R4	R8	R151
SANYO	0	0	0
SAMSUNG	0	0	0
MITSUMI	0	0	0
SONY 310	100	100	0
THOMSON	240	0	0

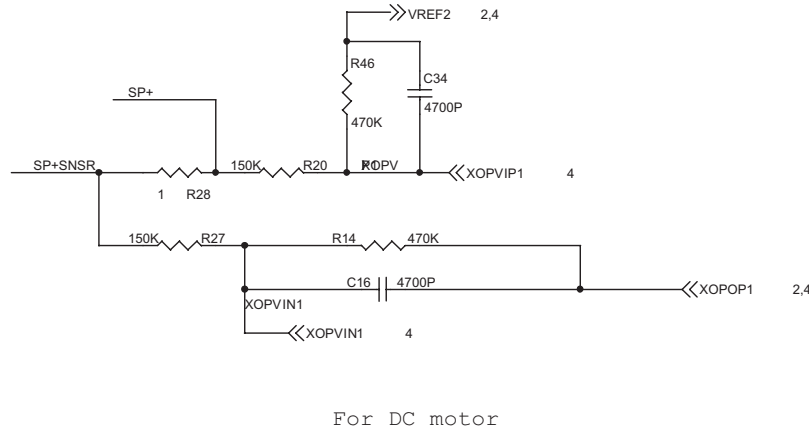
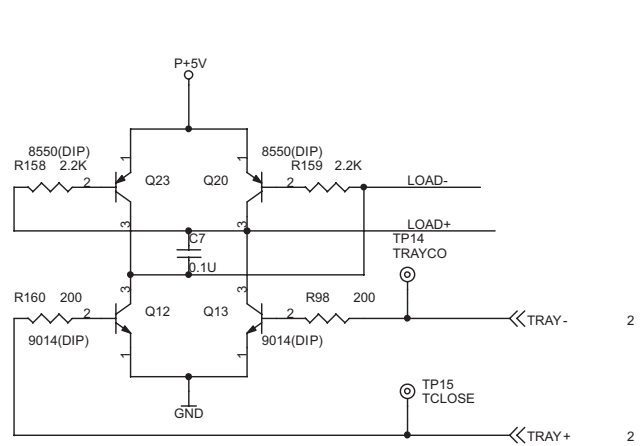
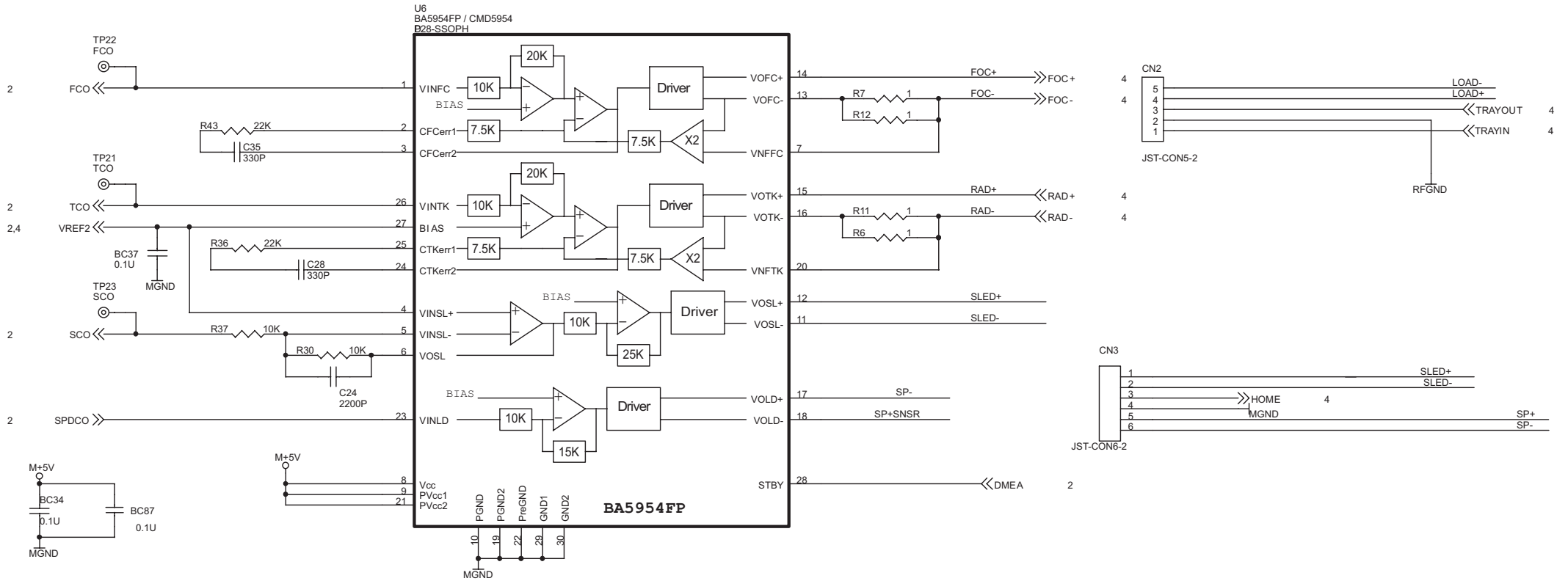
	XOPVIP1	XOPVIN1	XOPOP1
	5	5	2.5



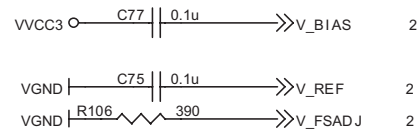
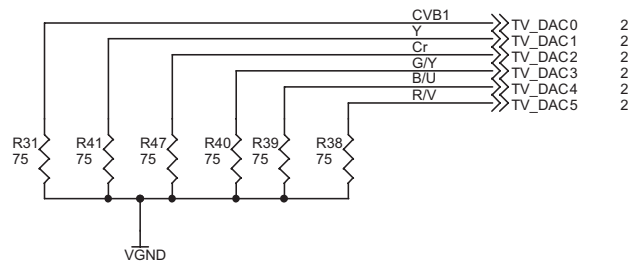
	R182	R151
HOP1200, AATek	100	NC
Arima	560	NC

PRÉ-AMPLIFICADOR

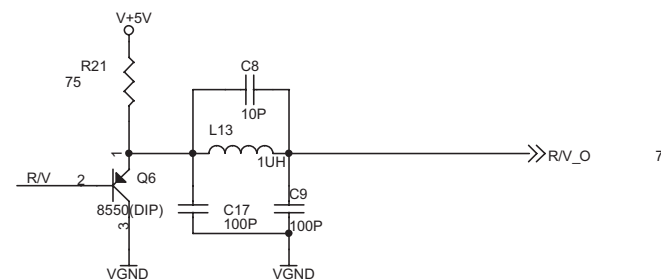
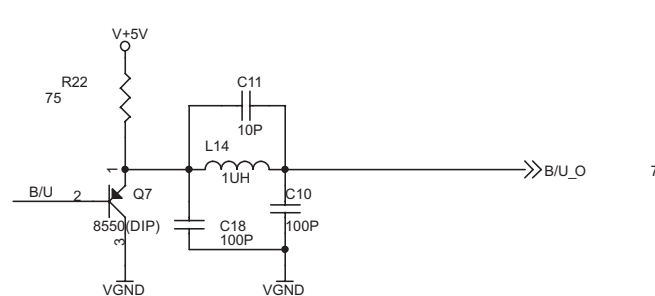
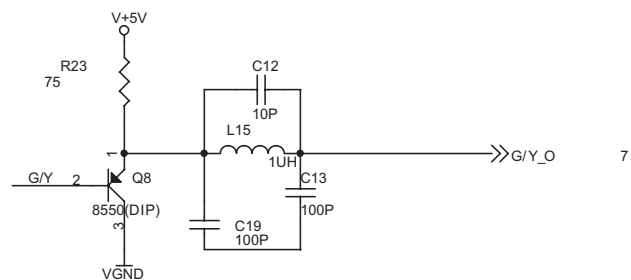
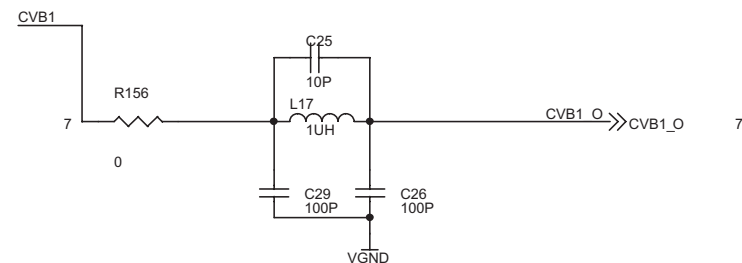
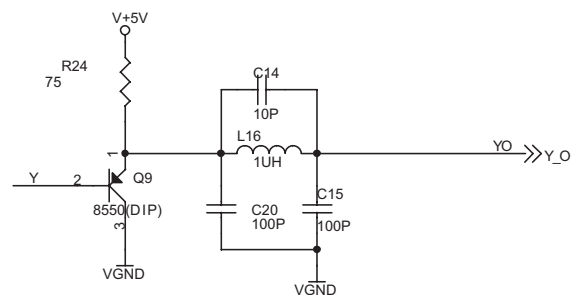
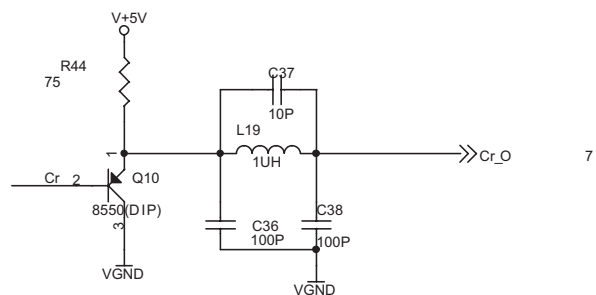
Close to CPU connector!
Reduce noise!



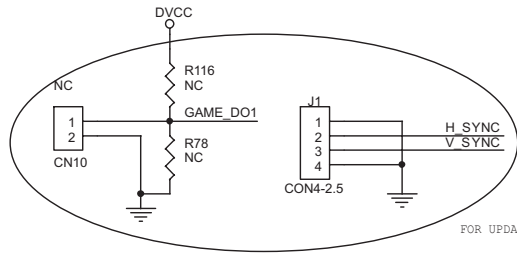
DRIVERS MECANISMO



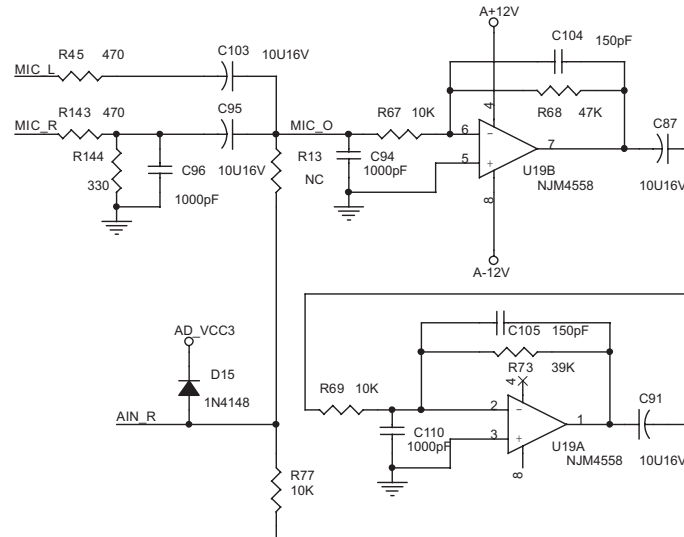
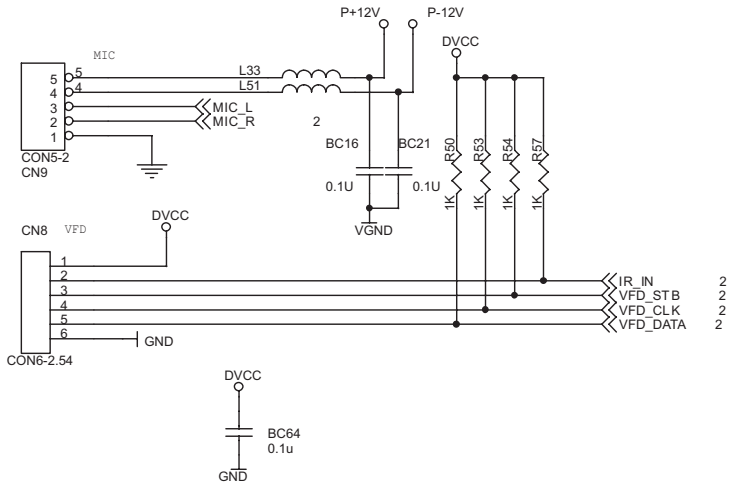
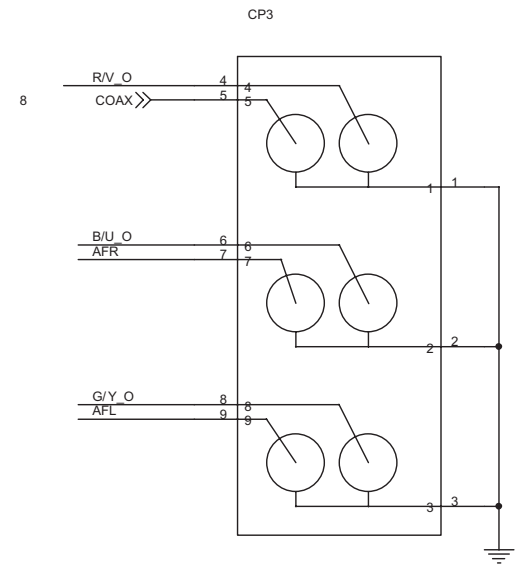
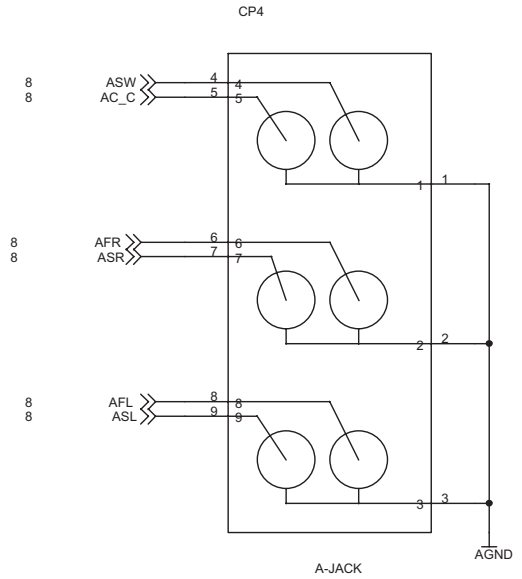
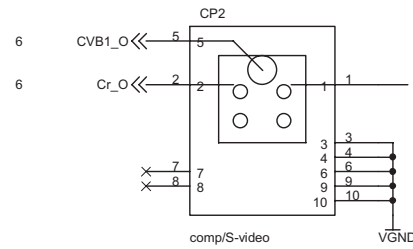
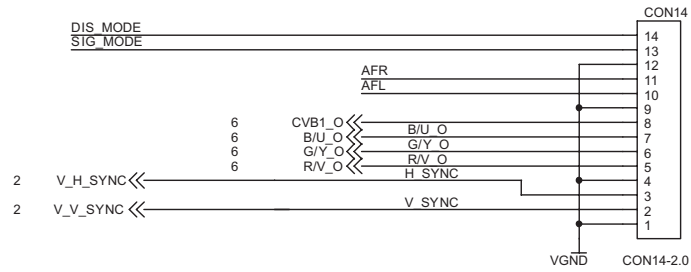
BUFFER SINAL DE VÍDEO



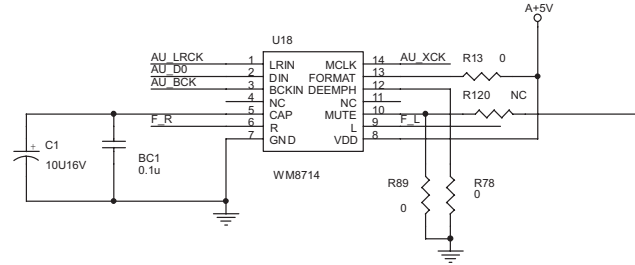
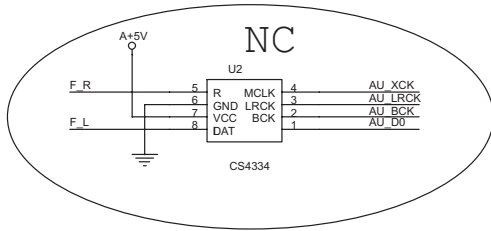
CONECTORES E PINOS



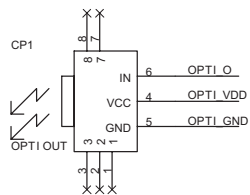
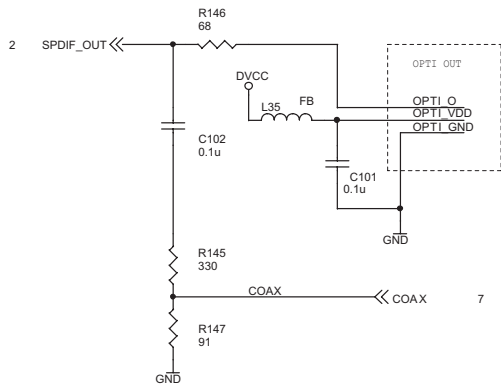
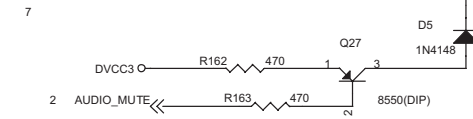
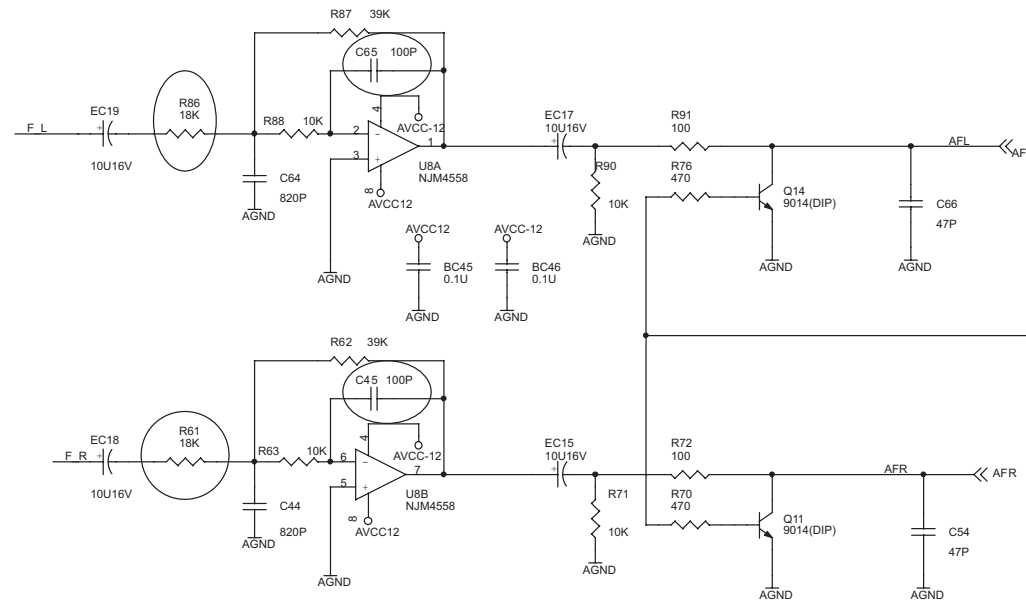
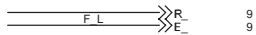
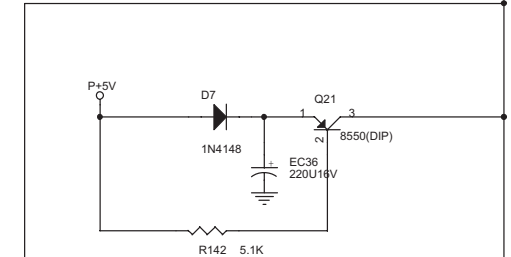
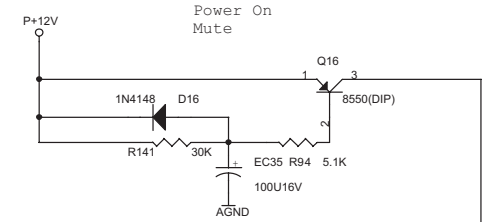
FOR UPDATE ROM



AUDIO DAC



These AUDIO_DAC will only select one.



FILTROS DE ÁUDIO E MUTE