

Manual de Serviço



**D
V
D

T
R
A
V
E
L**

0800 415300

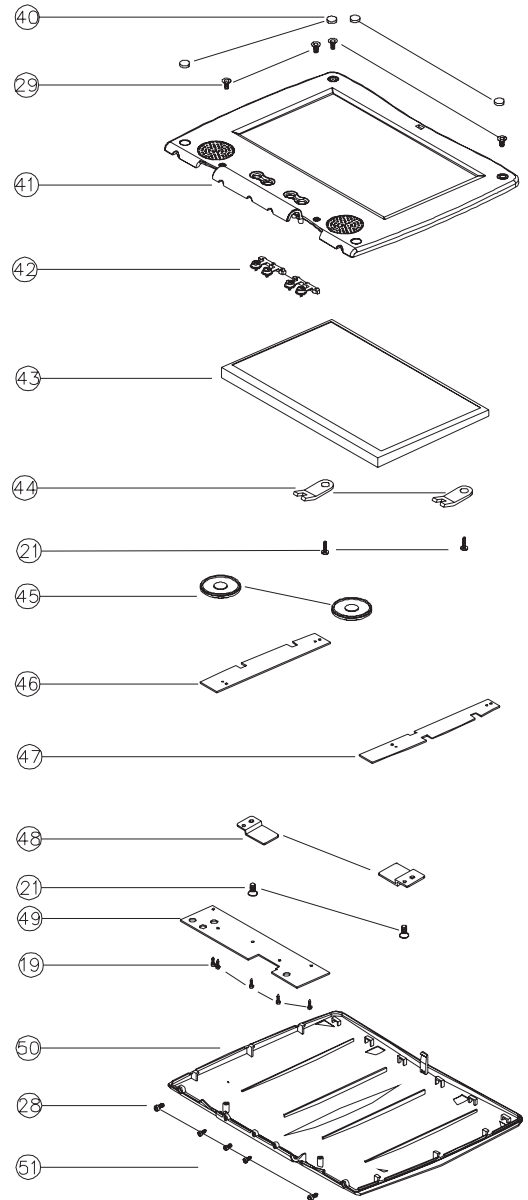
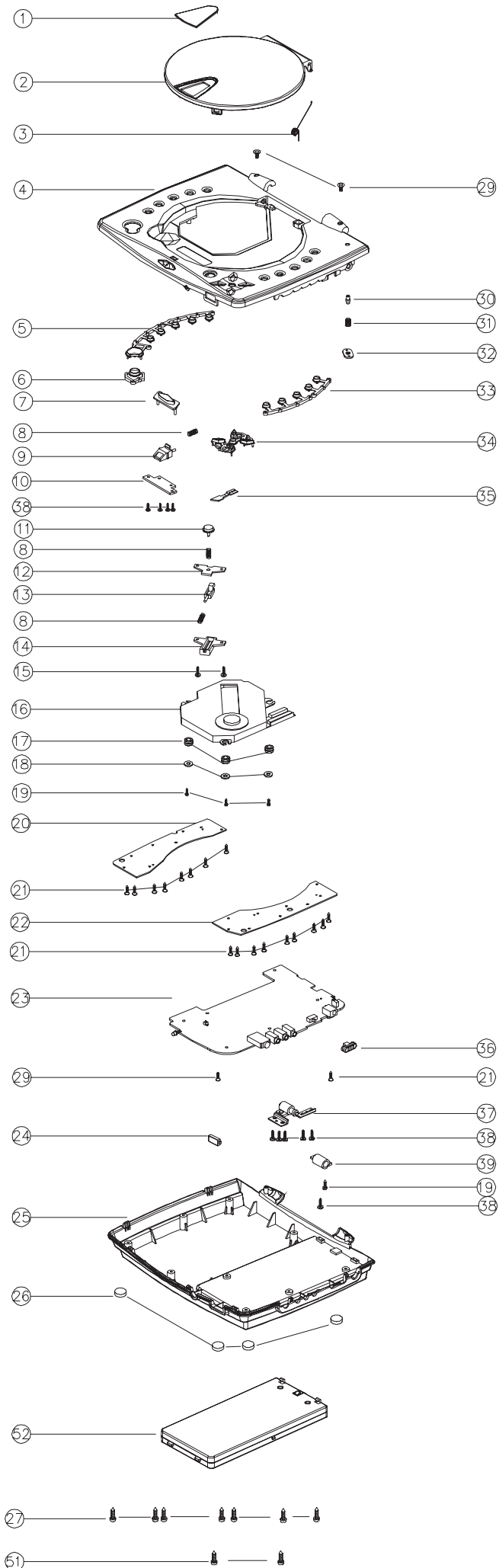
assistenciatecnica@britania.com.br

Política da Qualidade Britânia

"Oferecer produtos que contribuam para a satisfação de nossos clientes, buscando a melhoria contínua de nossos processos"

VISTA EXPLODIDA

CÓDIGO DO PRODUTO
67003001



ITENS DA VISTA EXPLODIDA

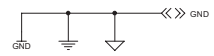
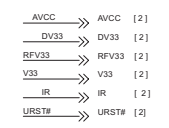
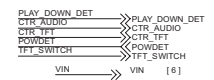
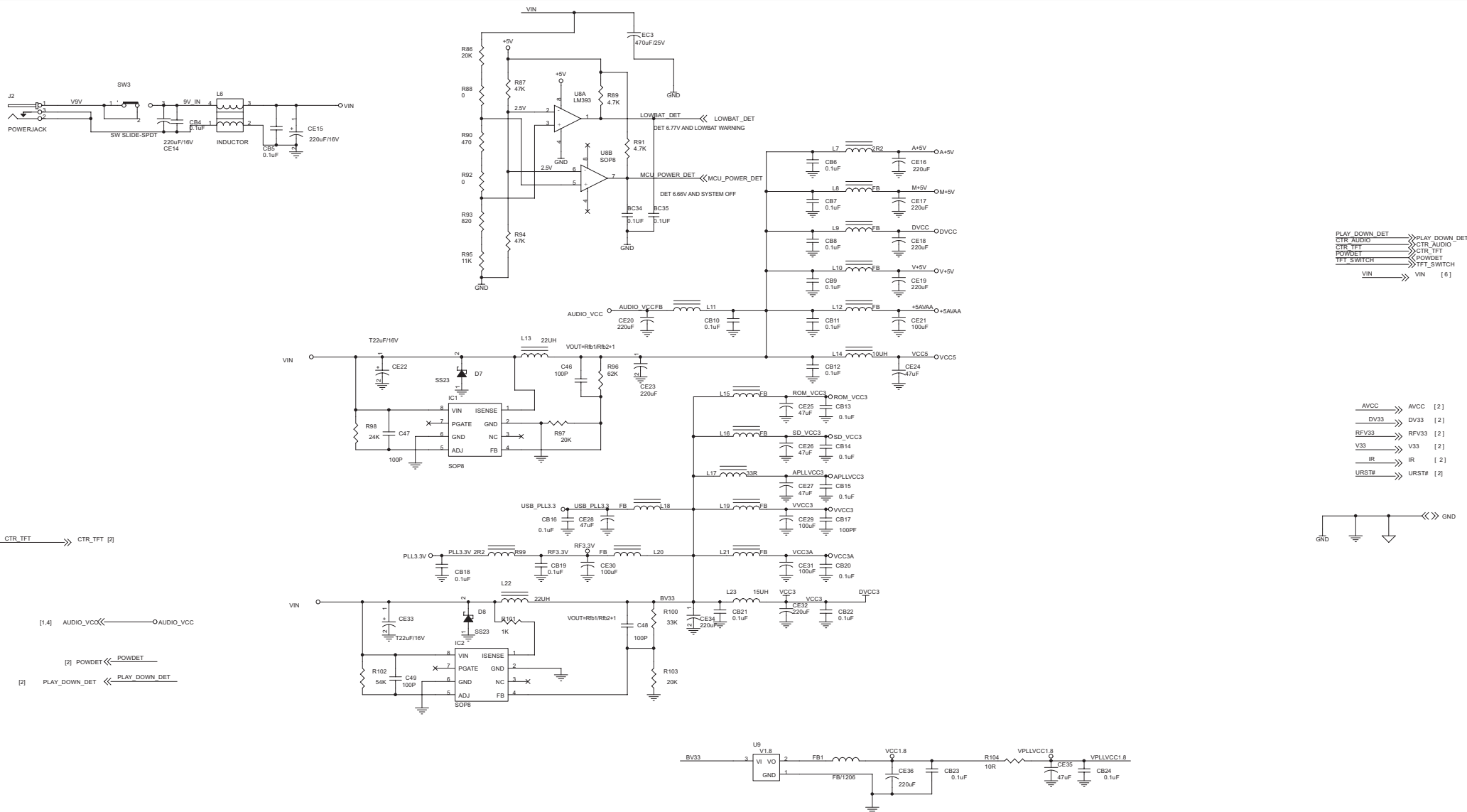
Nº	DESCRIÇÃO	CÓDIGO
1	VISOR DA TAMPA DVD	704311
2	TAMPA DVD	704310
3	MOLA DA TAMPA	704312
4	GABINETE INTERMEDIÁRIO	704292
5	BOTÕES AUDIO/DISPLAY/SUBTITLE	704306
	BOTÕES FFWD/FBWB/VOLUME "+"	704307
	BOTÃO VOLUME "-"	704308
7	BOTÃO ABERTURA DA TAMPA	704293
8	MOLA BOTÃO DA TRAVA/BOTÃO OPEN	704295
9	TRAVA FIXAÇÃO MONITOR	704338
10	SUPORTE DO BOTÃO DA TRAVA	704294
11	BOTÃO OPEN	704296
12	SUPORTE BOTÃO OPEN	704297
13	TRAVA TAMPA DVD	704339
14	SUPORTE TRAVA TAMPA DVD	704340
16	UNIDADE ÓTICA C/ TRAVA HT 343/DV34 C.SLIM/ D.TRAVEL	703204
17	AMORTECEDOR BSI-9000/C. SLIM/D.TRAVEL	703260
20	PCI TECLADO COMANDOS DVD + VOLUME 001-DPX3302-OKB	704305
22	PCI TECLADO COMANDOS DVD + SETUP 001-DPX3302-OKB	704298
23	PCI PRINCIPAL 001-DPX3302-001	704284
24	VISOR DO RECEPTOR REMOTO	704309
25	GABINETE INFERIOR	704283
26	PEZINHOS	704332
30	BOTÃO DA CHAVE LEAF	704299
31	MOLA BOTÃO CHAVE LEAF	704300
32	SUPORTE BOTÃO CHAVE LEAF	704333
33	BOTÕES STOP/PLAY-PAUSE/SETUP	704301
	BOTÕES NEXT/PREV	704302
34	BOTÕES DIRECIONAIS/ENTER	704303
	BOTÕES DIRECIONAIS SUP.	704304
36	KNOB CHAVE POWER ON/OFF	704289
37	SUPORTE DA TAMPA INTERMEDIÁRIA	704313
39	PASSAGEM DE CABOS	704314
40	AMORTECEDOR DO PAINEL	704331
41	GABINETE INT MONITOR	704315
42	BOTÕES BRIGHTNESS "+-"	704326
	BOTÕES COLOUR "+-"	704327
43	DISPLAY MONITOR LCD	704316
45	ALTO-FALANTE 4OHMS / 2W	704322
46	PCI MONITOR 001-DPX302A-0N7	704317
47	PCI MONITOR 001-DPX302A-0HS	704320
48	TRAVA INT FIXAÇÃO DO MONITOR	704323
49	PCI BRILHO / COR 001-DPX-3302-OGA	704324
50	GABINETE EXT MONITOR	704341
52	BATERIA RECARREGÁVEL 9VDC	704282

DEMAIS COMPONENTES FORNECIDOS

DESCRIÇÃO	CÓDIGO	LOCALIZAÇÃO
ADAPTADOR 12V AUTOMOTIVO D.TRAVEL	704335	
BATERIA LITHIUM 3V CR2025	075147	
CABO SAÍDA RCA D.TRAVEL	704337	
CERTIFICADO GARANTIA ÁUDIO E VÍDEO	701872	
CHAVE LEAF 059/069/079/D.TRAVEL	702376	SW1
CHAVE POWER ON/OFF	704288	SW3
CIRC. INT 1117-18	702299	U9
CIRC. INT ACT 4060 (SMD)	704290	IC1, IC2
CIRC. INT. 1117	702299	U2
CIRC. INT. 24LC02	702326	U4
CIRC. INT. 26LV800BTC-55	702510	U6
CIRC. INT. CHMC S5323	704285	U2
CIRC. INT. D4558 (SMD)	703078	U10
CIRC. INT. HCU04 (SMD)	701400	U8
CIRC. INT. LRS 5752	704325	U1
CIRC. INT. MEMÓRIA K4S641632K TC7S	704286	U3
CIRC. INT. S18B (SMD)	704318	
CIRC. INT. SPHE8202S	704266	U7
CIRC. INT. WM8720	701747	U1
CONJ CALÇO DE PROTEÇÃO	704330	
CONTROLE REMOTO	704328	
EMBALAGEM	704329	
FLAT CABLE 24 VIAS 1 1,9 CM X 1,2 CM LADOS INVERTIDOS	704291	
FONTE ALIMENTAÇÃO 9V-1800mA	704281	
JAQUE ENTR DC BS270/279/D.TRAVEL	702365	J2
JAQUE FONE DE OUVIDO	700365	J7
JAQUE PRE 270/279/289/PS100/D.TRAVEL	700365	J3,J5
JAQUE VIDEO/AUDIO OUT	704287	
MALA TRANSPORTE D.TRAVEL	704334	
MANUAL DO USUÁRIO	704280	
TRANSISTOR 2124(SMD)	704319	
TRANSISTOR BAR (SMD)	702306	Q10,Q11
TRANSISTOR DKQN	704321	Q1,Q2

NOTA:

Dos itens da página anterior, somente aqueles que possuem códigos relacionados nas tabelas serão fornecidos.



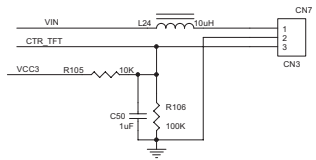
CTR_TFT <<< CTR_TFT [2]

[1,4] AUDIO_VCC <<< AUDIO_VCC

[2] POWDET <<< POWDET

[2] PLAY_DOWN_DET <<< PLAY_DOWN_DET

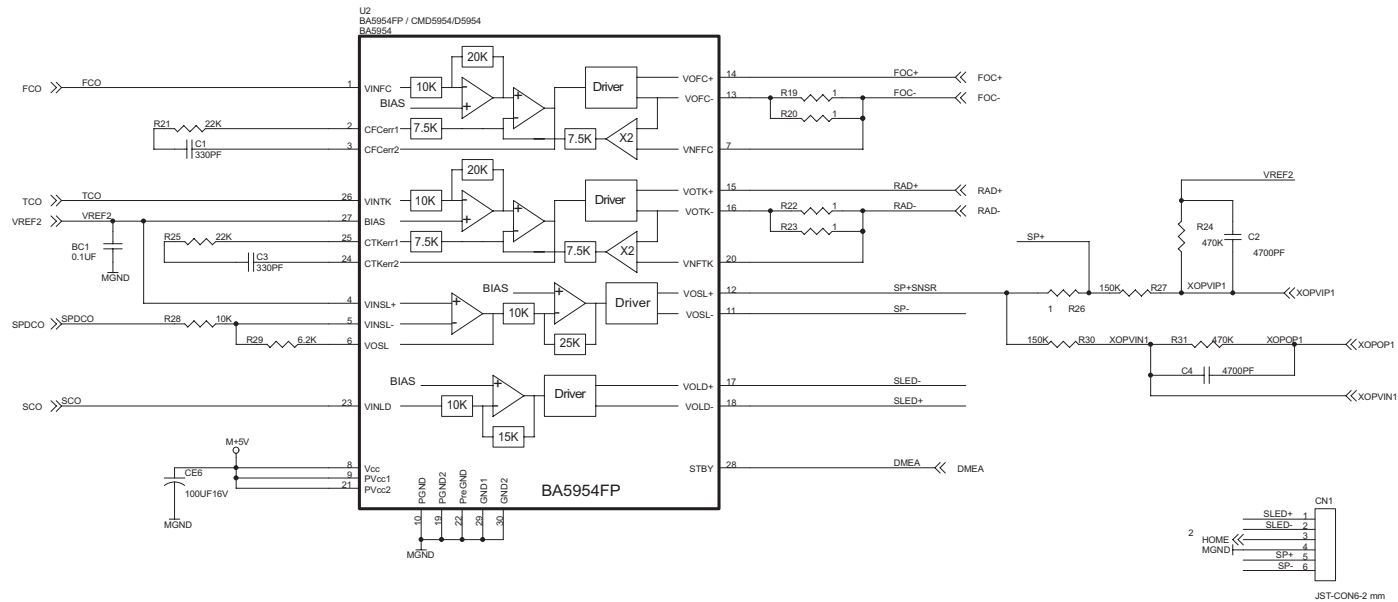
ESTÁGIO ALIMENTAÇÃO PCI PRINCIPAL



Szafield & Freitas / Curitiba

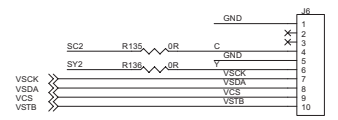
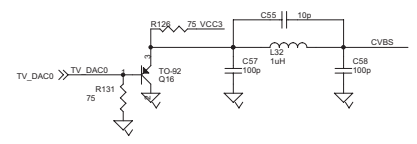
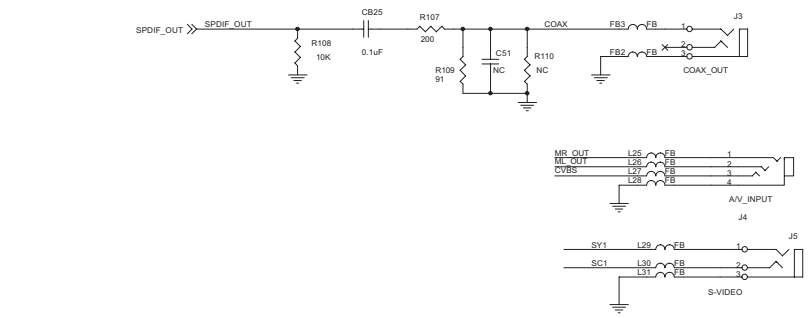
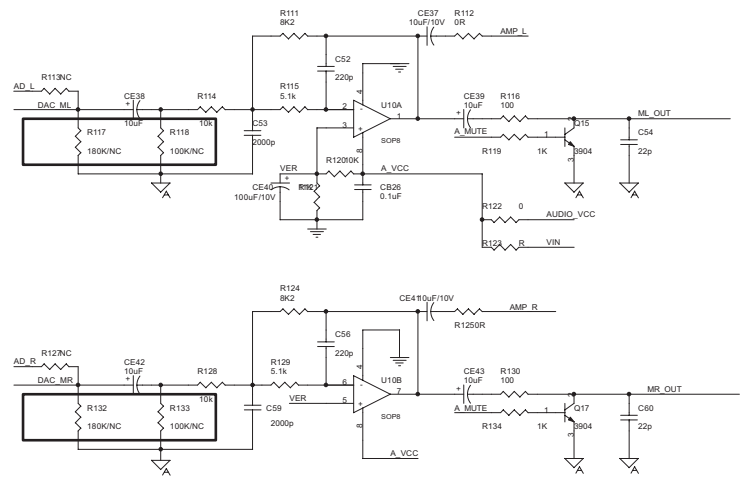
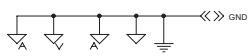
jan/2006

DRIVER UNIDADE ÓTICA



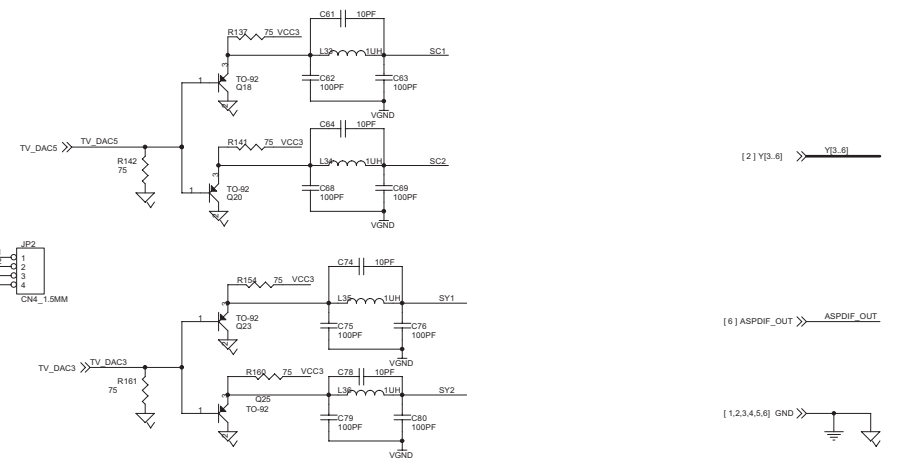
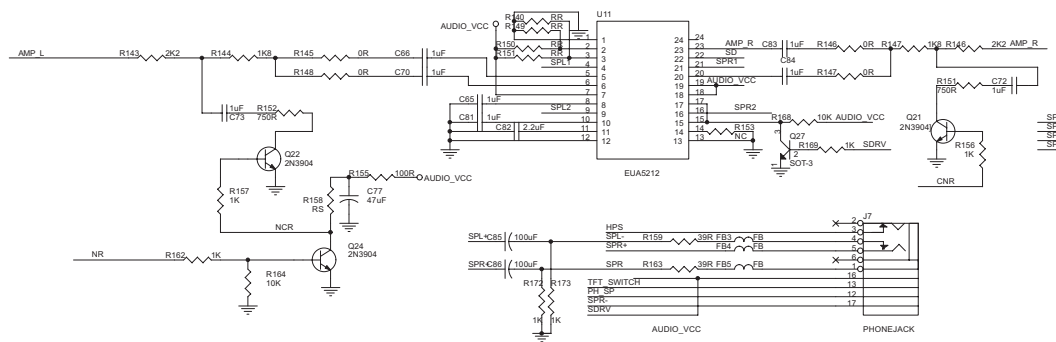
- [2] AD_L >> AD_L
- [2] AD_R >> AD_R
- [5] DAC_MR >> DAC_MR
- [5] DAC_ML >> DAC_ML
- [7] SPDIF_OUT >> SPDIF_OUT
- [5] A_MUTE >> A_MUTE

- [1] AUDIO_VCC >> AUDIO_VCC
- [1] VIN >> VIN
- [1] VCC3 >> VCC3

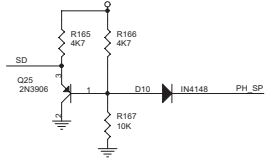
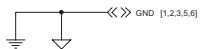


AMPLIFICADORES E SAÍDA DE ÁUDIO

I2S FORMAT

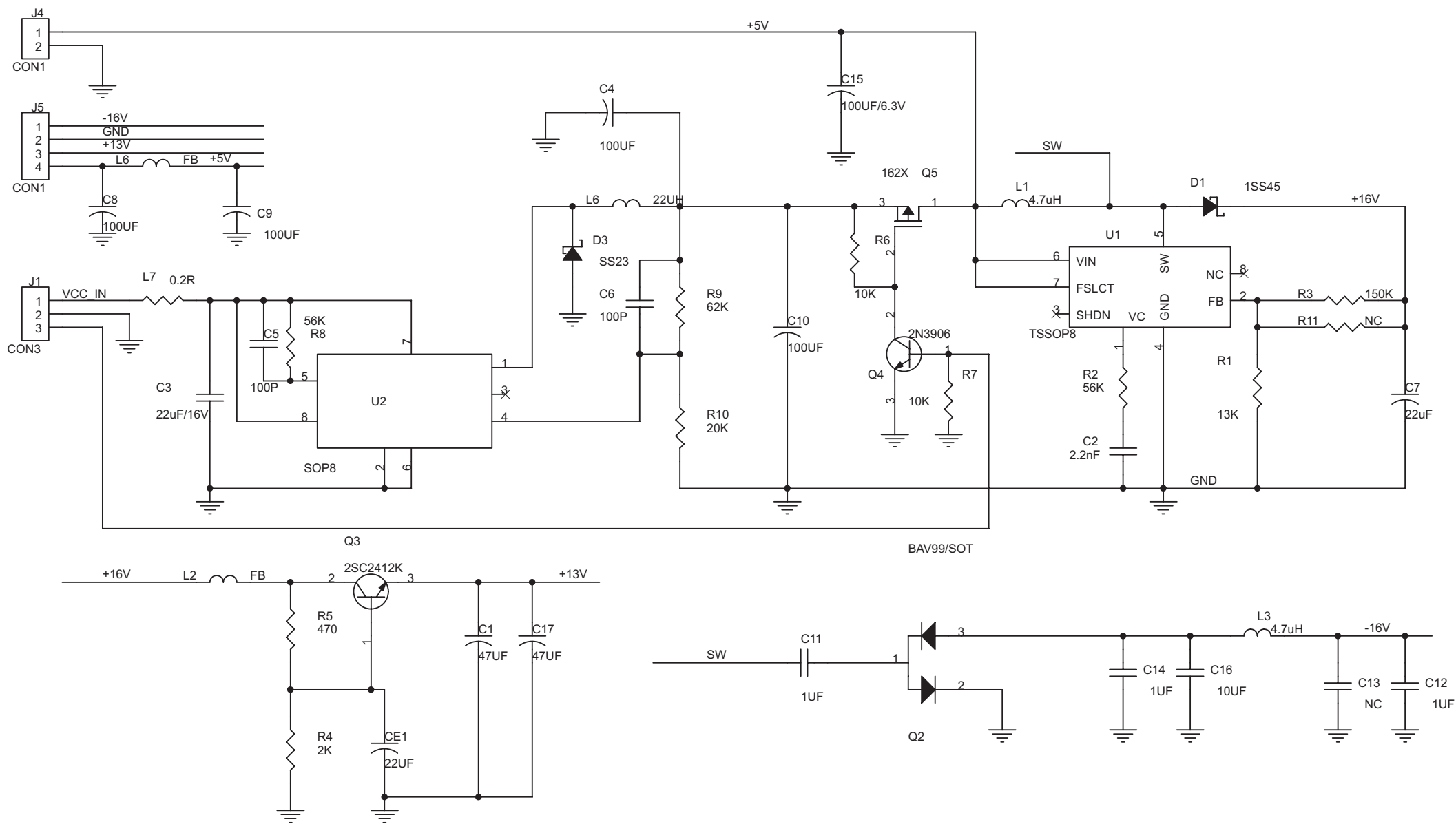


- [2] CD_CONTRAL >> CD_CONTRAL
- [2] TFT_SWITCH >> TFT_SWITCH
- [2] AMP_CLK >> AMP_CLK

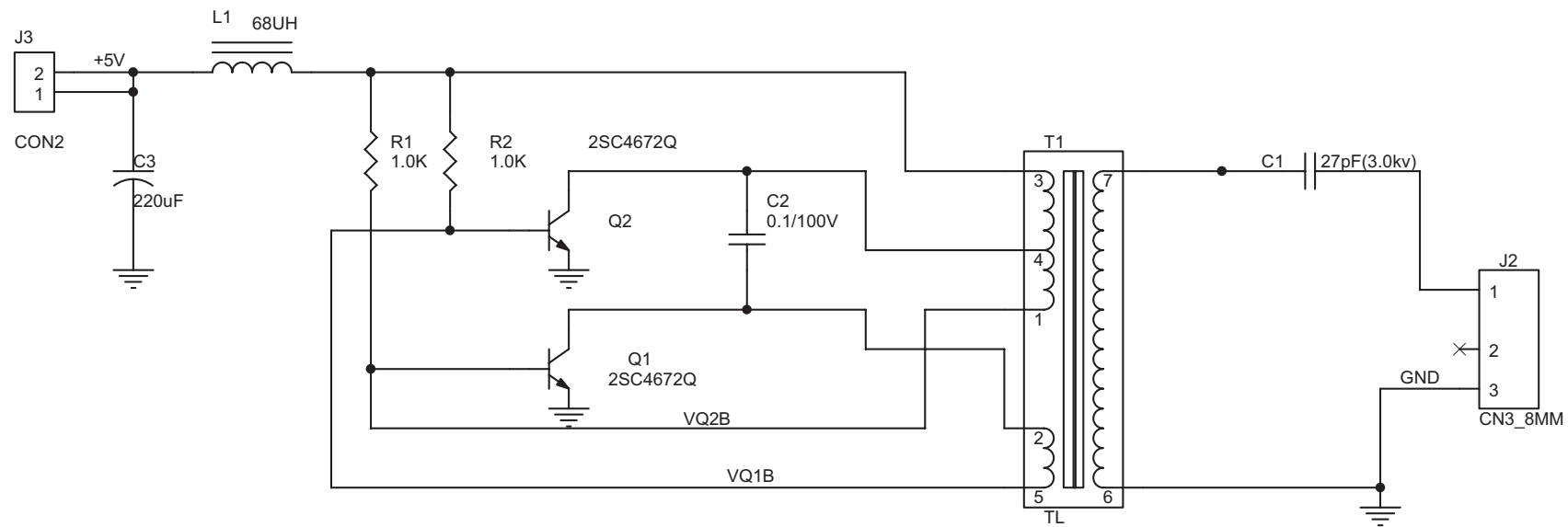


Szafield & Freitas / Curitiba

ESTÁGIO ALIMENTAÇÃO PCI E MONITOR LCD



ESTÁGIO ALIMENTAÇÃO MONITOR LCD



ESTÁGIO CONTROLE MONITOR LCD

