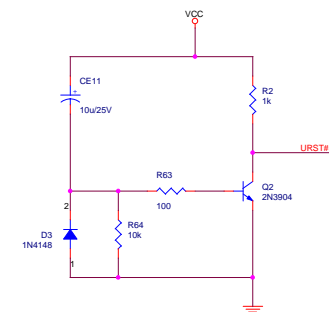
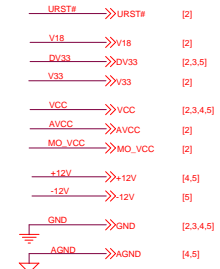
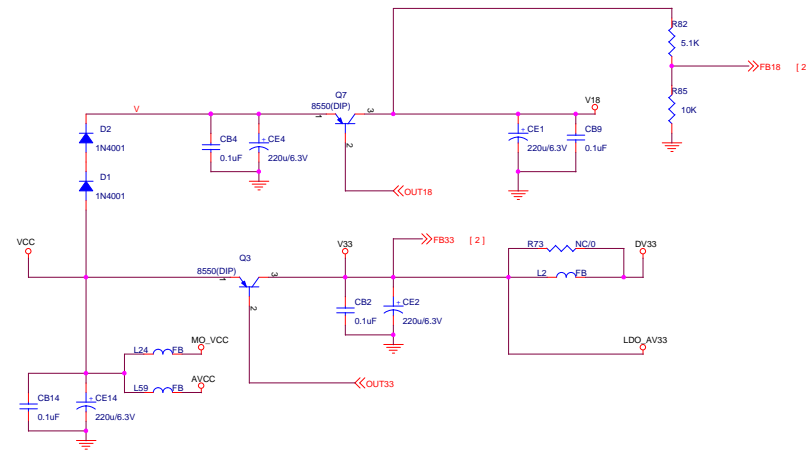
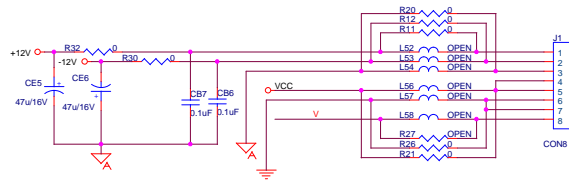


MT1389QE/D (LQFP216) DVD Demo Board for HOP1200 PUH

- 1 INDEX & POWER, RESET
- 2 RF, SERVO & MPEG - MT1389E
- 3 MEMORY - SDRAM, FLASH/EEPROM
- 4 VIDEO OUT
- 5 AUDIO DAC CS4360 AND AUDIO OUT

Rev	History	P#	Date
V1	The original released.		

NAME	TYPE	DEVICE
VCC	Digital 5V	SUPPLY
DV33	Digital 3.3V	MT1389D
RFVDD3	Servo 3.3V	MT1389D
AVCC	RF 5V	PICKUP HEADER
MO_VCC	Motor 5V	Motor Driver
V18	Digital 1.8V	MT1389D
SD33	Digital 3.3V	SDRAM
+12V	Audio +12V	OP AMP.
-12V	Audio -12V	OP AMP.
A_AVDD	Audio 5V	Audio DAC
+5VV	Video 5V	Video Driver

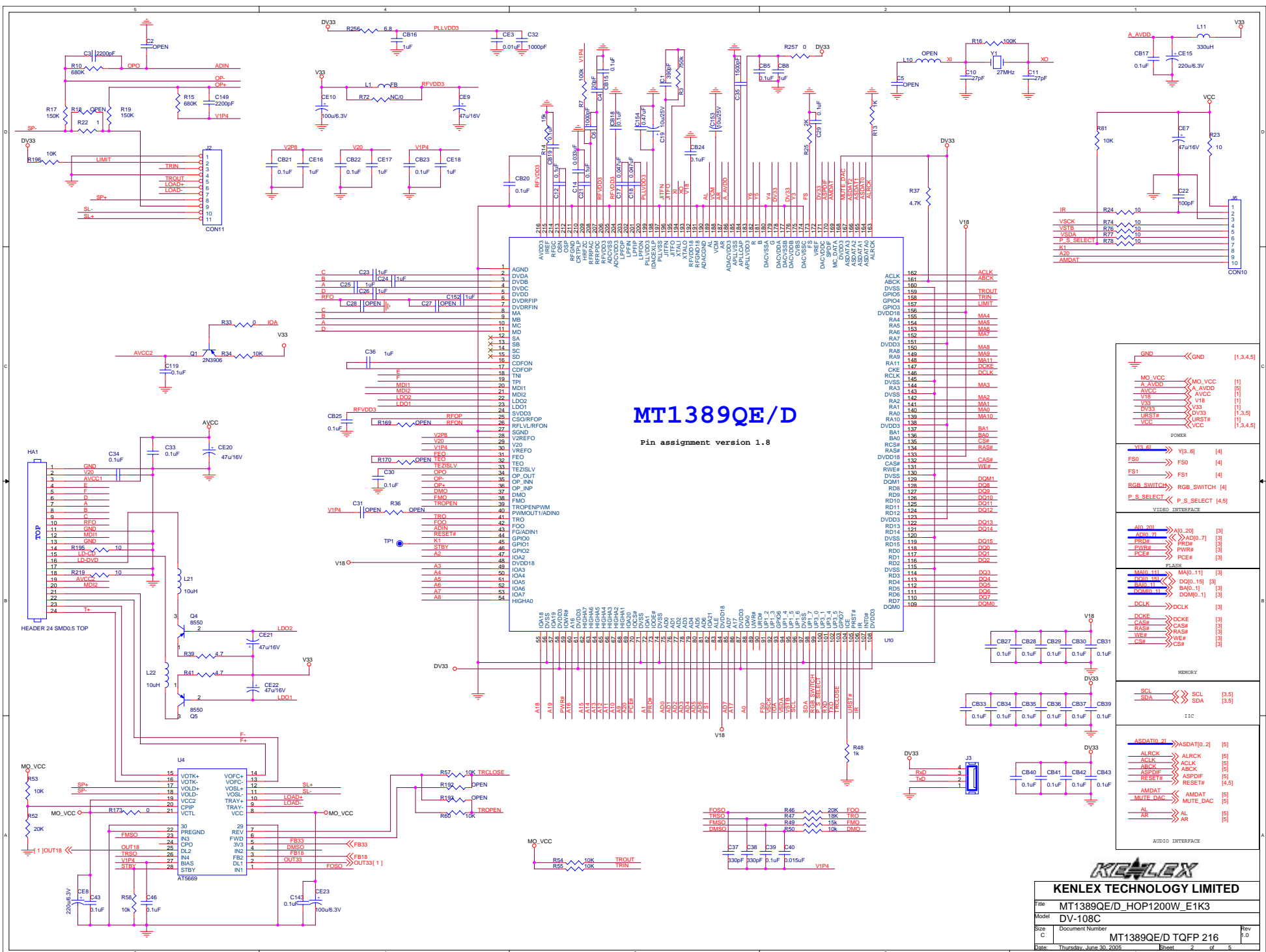


! 设计和规格如有变更恕不另行通知!
 • Designs and specifications are subject to change without notice.



KENLEX TECHNOLOGY LIMITED

File	MT1389QE/D_HOP1200W_E1K3		
Model	DV-108C		
Size	Document Number	INDEX	Rev 1.0
C			
Date	Thursday, June 30, 2005	Sheet	1 of 5



MT1389QE/D

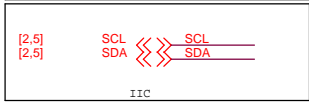
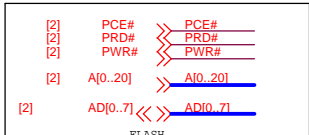
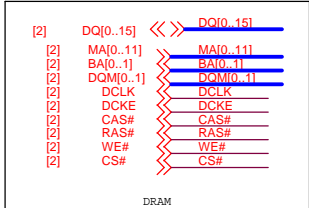
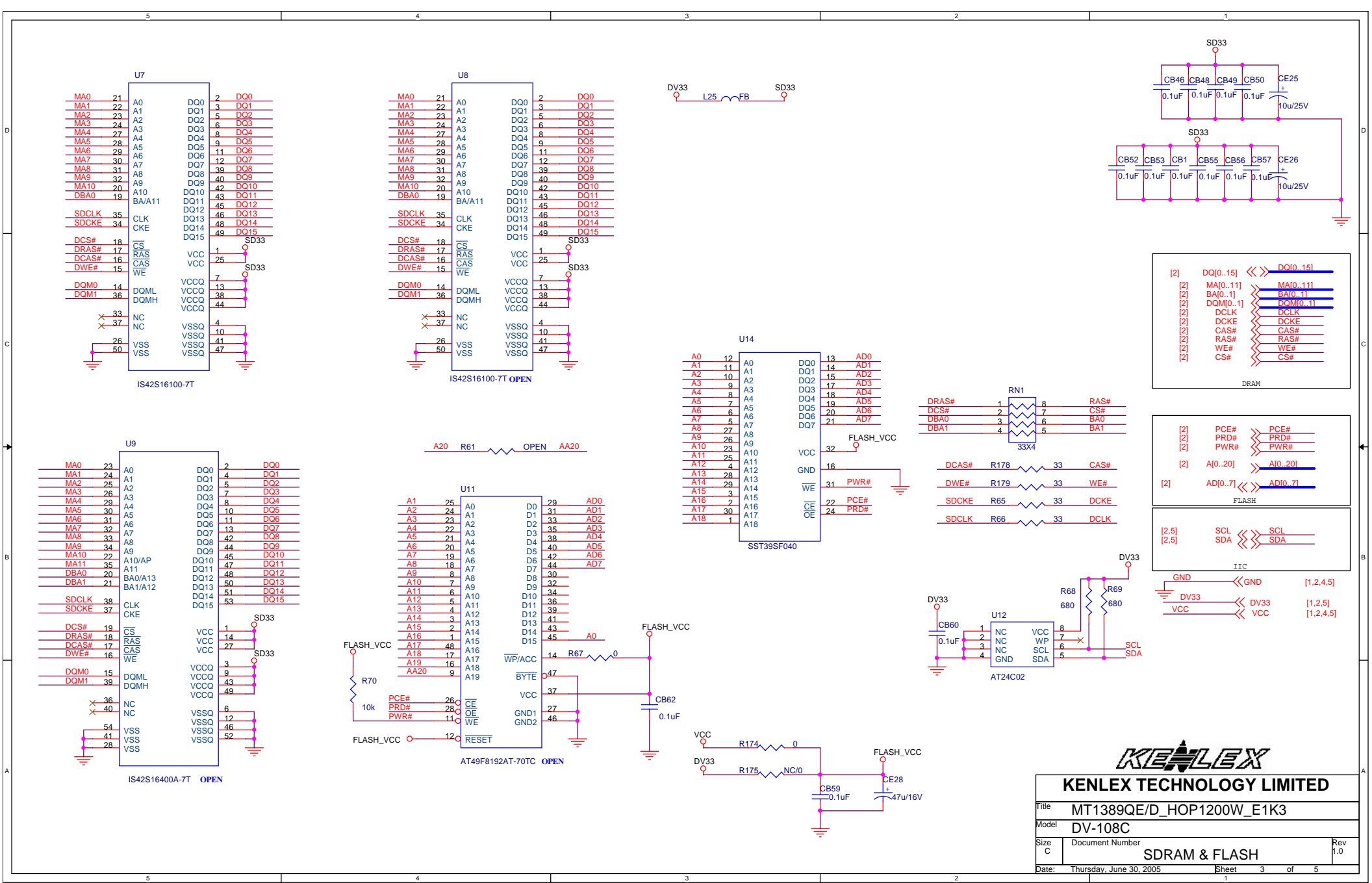
Pin assignment version 1.8

1	AGND	162	ACLK
2	DVDB	161	ABCK
3	DVDC	159	TRQOUT
4	DVDRFIP	158	TRIN
5	DVDRFIN	157	LIMIT
6	MA	156	MA4
7	MB	155	MA5
8	MC	154	MA6
9	MD	153	MA7
10	ME	152	MA8
11	MF	151	MA9
12	MG	147	MA10
13	SA	149	MA11
14	SB	148	MA12
15	SC	147	DOCKE
16	SD	146	DCCLK
17	CDP0N	145	RA3
18	CDP0P	144	RA4
19	TN	143	RA5
20	TP1	142	RA6
21	MD1	141	RA7
22	MD2	140	RA8
23	LDO1	139	RA9
24	SVD03	138	RA10
25	CS0R0P0P	137	BA1
26	RFLVLRFP0N	136	BA0
27	SGND	135	RC5W
28	OREF0	134	WE#
29	V2P8	133	CAS#
30	V1P4	132	RAS#
31	FEO	131	CS#
32	TEZSLV	130	DVSS
33	OP0	129	DM01
34	OP+	128	DM08
35	OP-	127	DM09
36	OP-IN	126	DM10
37	DNO	125	DM11
38	FMO	124	DM12
39	TROPEN	123	DM13
40	TROPENPWM	122	DM14
41	PWMOUT/ADNO	120	DM15
42	TR0	119	DM16
43	FCO	118	DM17
44	RGADN1	117	DM18
45	RESET#	116	DM19
46	GPIO0	115	DM20
47	GPIO1	114	DM21
48	GPIO2	113	DM22
49	IOA2	112	DM23
50	IOA3	111	DM24
51	IOA4	110	DM25
52	IOA5	109	DM26
53	IOA6	108	DM27
54	IOA7	107	DM28
55	IOA8	106	DM29
56	IOA9	105	DM30
57	IOA10	104	DM31
58	IOA11	103	DM32
59	IOA12	102	DM33
60	IOA13	101	DM34
61	IOA14	100	DM35
62	IOA15	99	DM36
63	IOA16	98	DM37
64	IOA17	97	DM38
65	IOA18	96	DM39
66	IOA19	95	DM40
67	IOA20	94	DM41
68	IOA21	93	DM42
69	IOA22	92	DM43
70	IOA23	91	DM44
71	IOA24	90	DM45
72	IOA25	89	DM46
73	IOA26	88	DM47
74	IOA27	87	DM48
75	IOA28	86	DM49
76	IOA29	85	DM50
77	IOA30	84	DM51
78	IOA31	83	DM52
79	IOA32	82	DM53
80	IOA33	81	DM54
81	IOA34	80	DM55
82	IOA35	79	DM56
83	IOA36	78	DM57
84	IOA37	77	DM58
85	IOA38	76	DM59
86	IOA39	75	DM60
87	IOA40	74	DM61
88	IOA41	73	DM62
89	IOA42	72	DM63
90	IOA43	71	DM64
91	IOA44	70	DM65
92	IOA45	69	DM66
93	IOA46	68	DM67
94	IOA47	67	DM68
95	IOA48	66	DM69
96	IOA49	65	DM70
97	IOA50	64	DM71
98	IOA51	63	DM72
99	IOA52	62	DM73
100	IOA53	61	DM74

POWER	
MO_VCC	MO_VCC [1]
A_AVDD	A_AVDD [1,3,4,5]
AVCC	AVCC [1]
V18	V18 [1]
V33	V33 [1]
DV33	DV33 [1,3,5]
URST#	URST# [1]
VCC	VCC [1,3,4,5]
VIDEO INTERFACE	
Y18_#	Y18_# [4]
FS0	FS0 [4]
FS1	FS1 [4]
RGB_SWITCH	RGB_SWITCH [4]
P_S_SELECT	P_S_SELECT [4,5]
MEMORY	
A[0..20]	A[0..20] [3]
AD[0..7]	AD[0..7] [3]
PRDE	PRDE [3]
PWR#	PWR# [3]
PCF#	PCF# [3]
SERIES	
MA[0..11]	MA[0..11] [3]
BA[0..1]	BA[0..1] [3]
DM[0..1]	DM[0..1] [3]
AUDIO INTERFACE	
ASDAT[0..2]	ASDAT[0..2] [5]
ALRCK	ALRCK [5]
ACLK	ACLK [5]
ABCK	ABCK [5]
ASPDIF	ASPDIF [5]
RESET#	RESET# [4,5]
AMDAT	AMDAT [5]
MUTE_DAC	MUTE_DAC [5]
AL	AL [5]
AR	AR [5]

KENLEX TECHNOLOGY LIMITED

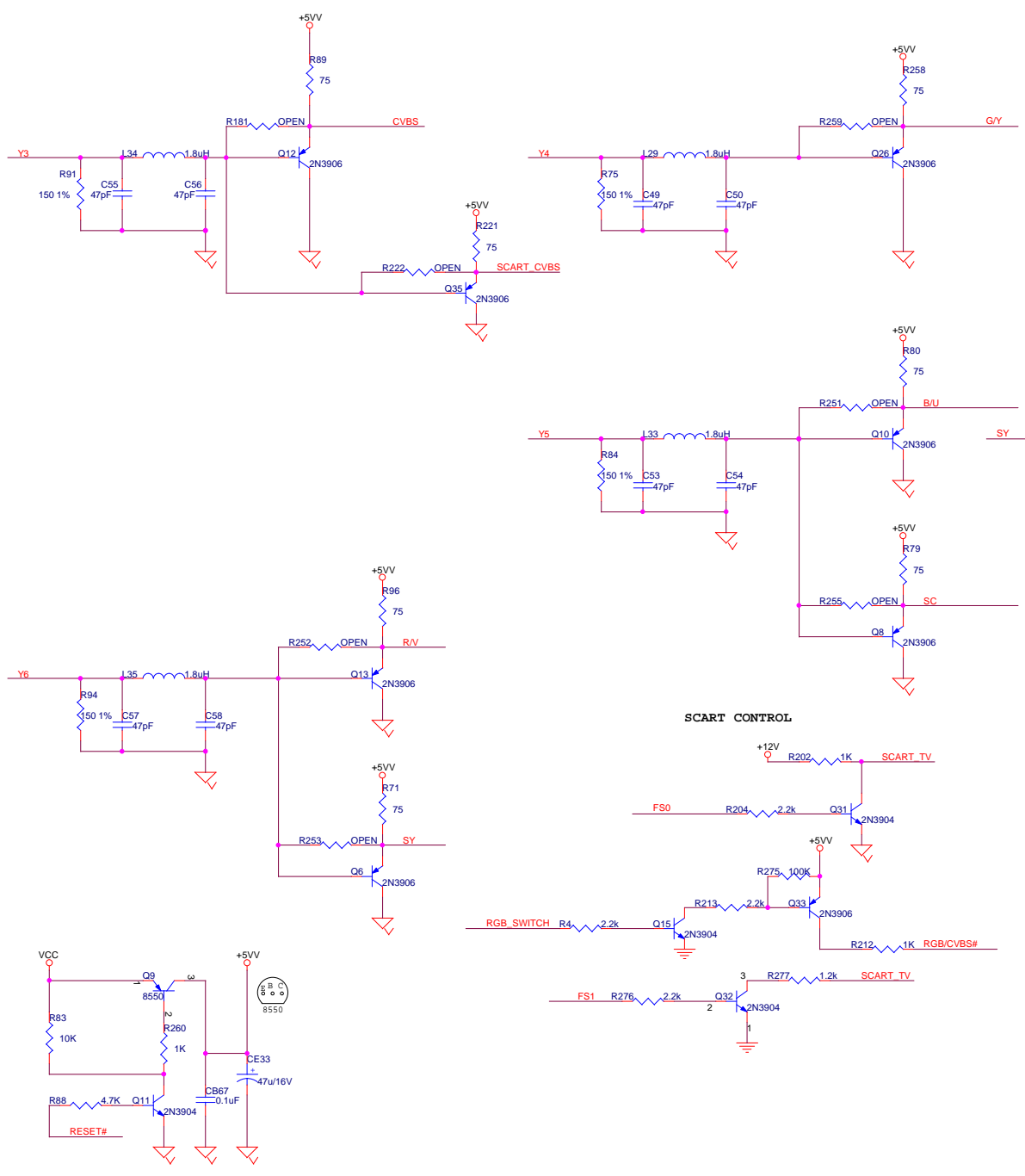
File: MT1389QE/D_HOP1200W_E1K3
 Model: DV-108C
 Size: C Document Number: MT1389QE/D TQFP 216 Rev: 1.0
 Date: Thursday, June 30, 2005 Sheet: 2 of 5



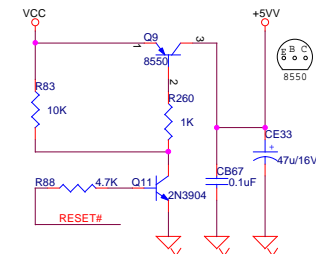
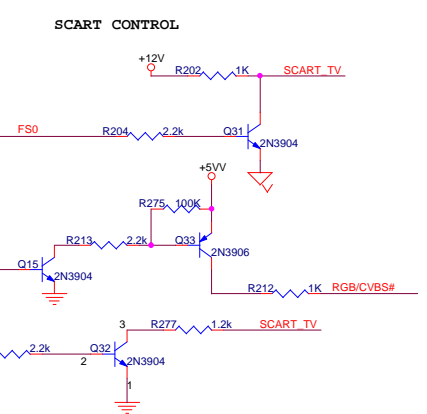
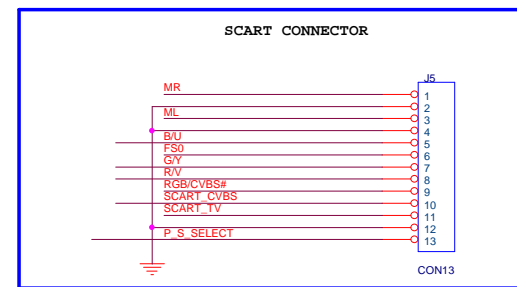
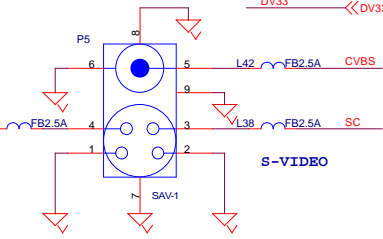
KENLEX TECHNOLOGY LIMITED

Title		MT1389QE/D_HOP1200W_E1K3	
Model		DV-108C	
Size	Document Number	SDRAM & FLASH	
Date:	Thursday, June 30, 2005	Sheet	3 of 5

Rev 1.0

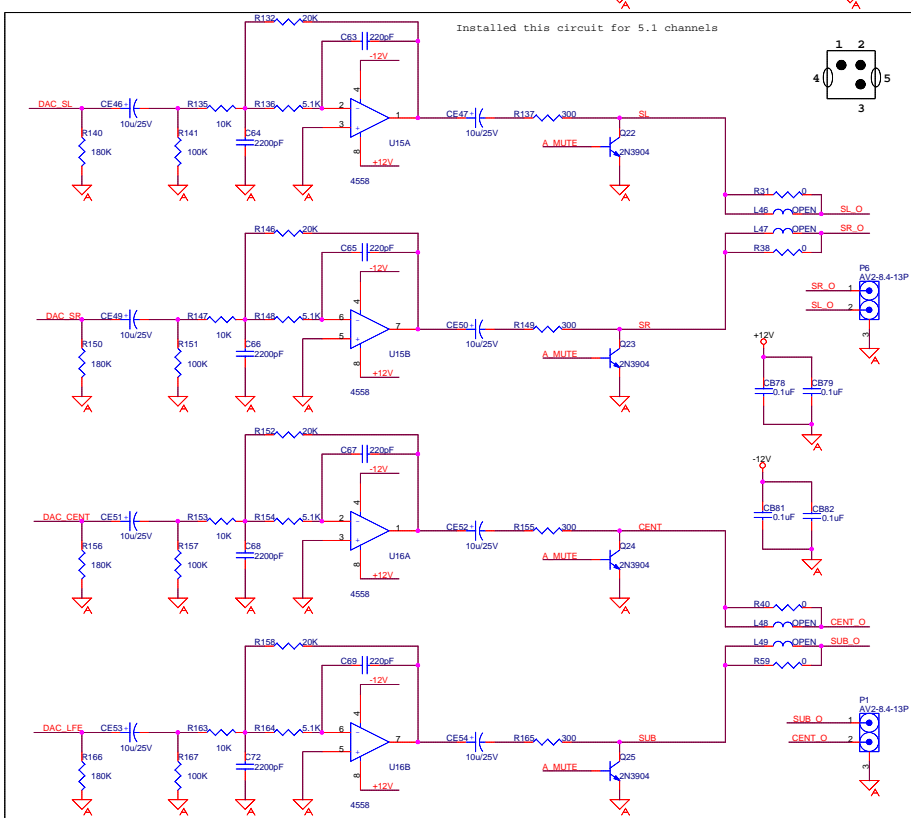
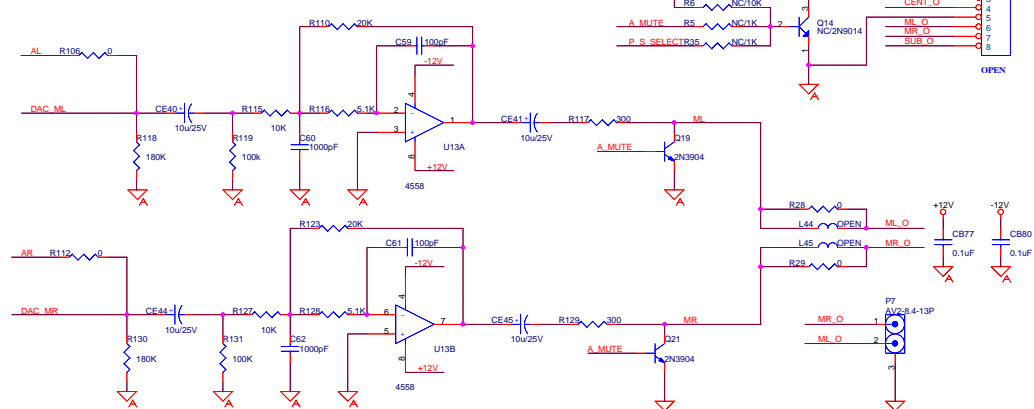
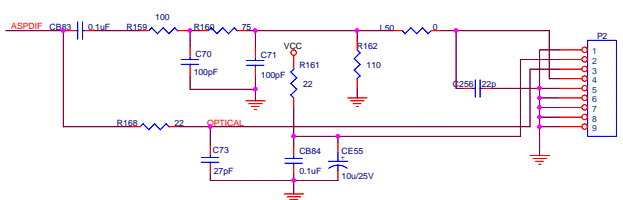
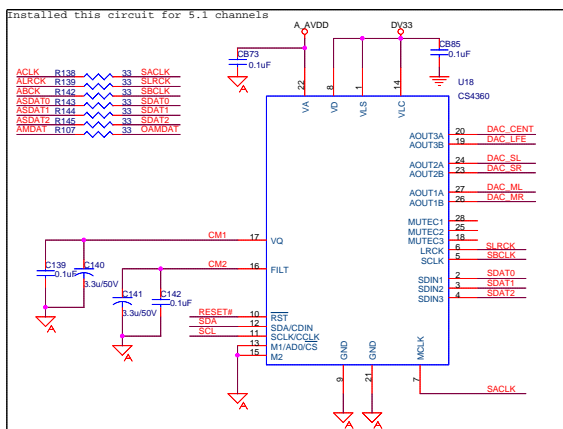
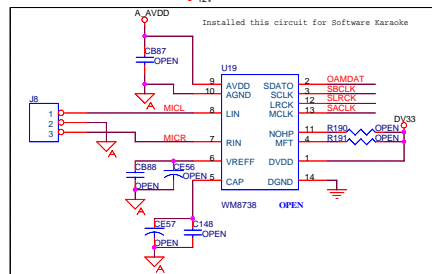
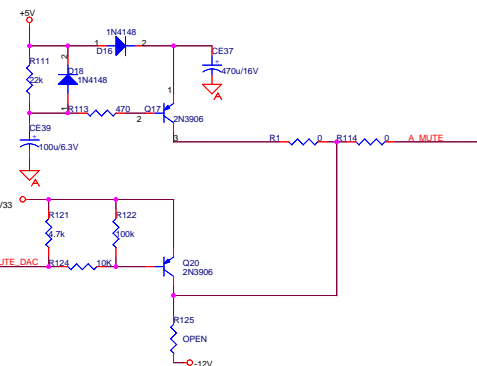


- Y[3..6] << Y[3..6] [2]
- P_S_SELECT << P_S_SELECT [2,5]
- ML << ML [5]
- MR << MR [5]
- RESET# << RESET# [2,5,1]
- GND << GND [1,2,3,5]
- AGND << AGND [1,5]
- VCC << VCC [1,2,3,5]
- +12V << +12V [1,5]
- FS1 << FS1 [2]
- FS0 << FS0 [2]
- RGB_SWITCH << RGB_SWITCH [2]
- DV33 << DV33 [1,3,5]



KENLEX TECHNOLOGY LIMITED	
Title	MT1389QE/D_HOP1200W_E1K3
Model	DV-108C
Size	C
Document Number	VIDEO OUT
Date	Thursday, June 30, 2005
Sheet	4 of 5
Rev	1.0

- [1] -12V >> -12V
- [1,4] +12V >> +12V
- [1,2,3] DV33 >> DV33
- [1,2,3,4] VCC >> A_AVDD
- [2] A_AVDD >> A_AVDD
- [1,2,3,4] GND >> GND
- [1,4] AGND >> AGND
- [2] ASPDF >> ASPDF
- [2] ASDAT0.2 >> ASDAT0_2
- [2] ACLK >> ACLK
- [2] ABCK >> ABCK
- [2] ALRCK >> ALRCK
- [2] MUTE_DAC >> MUTE_DAC
- [2,4] RESET# >> RESET#
- [4] ML >> ML
- [4] MR >> MR
- [2] AMDAT >> AMDAT
- [2] AL >> AL
- [2] AR >> AR
- [2,3] SCL >> SCL
- [2,3] SDA >> SDA
- [2,4] P_S_SELECT >> P_S_SELECT



KENLEX TECHNOLOGY LIMITED	
File	MT1389QE/D_HOP1200W_E1K3
Model	DV-108C
Size	Document Number
C	AUDIO OUT
Date	Thursday, June 30, 2005
Sheet	5 of 5